

RNAV (GPS) RWY 36

SHELBY COUNTY (2H(0))

APP CRS	Rwy Idg	4098
002°	TDZE	619
	Apt Elev	619

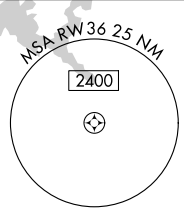
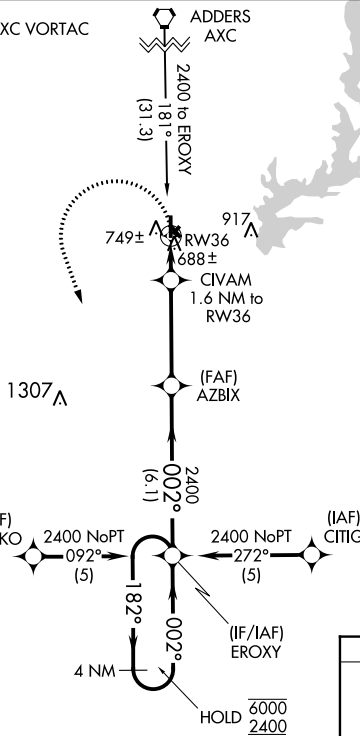
RNP APCH - GPS.

NA Circling NA to Rws 4, 14, 22, and 32. Use Decatur altimeter setting, when not received use Mattoon/Charleston altimeter setting and increase all MDAs 20 feet, and Circling Cat C visibility ¼ SM. Rwy 36 helicopter visibility reduction below 1 SM NA. Straight-in and Circling Rwy 36 NA at night.

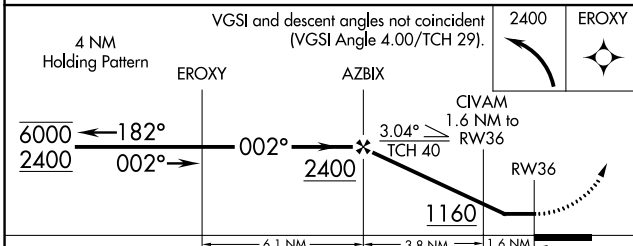
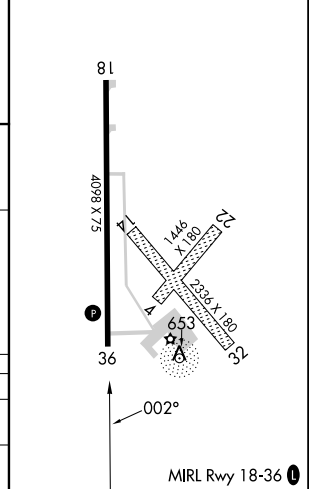
MISSED APPROACH:
Climbing left turn to 2400 direct EROXY and hold.

DEC ASOS 126.35	KANSAS CITY CENTER 124.3 269.15	UNICOM 122.8 (CTAF)
---------------------------	---	-------------------------------

Procedure NA for arrival on AXC VORTAC airway radials 098 CW 217.



ELEV 619	TDZE 619
----------	----------



CATEGORY	A	B	C	D
LNVA MDA	1080-1	461 (500-1)	1080-1 3/8 461 (500-1 3/8)	NA
C CIRCLING	1280-1	661 (700-1)	1340-2 721 (800-2)	NA