

WAAS CH <b>58203</b> <b>W18A</b>	APP CRS <b>179°</b>	Rwy Idg TDZE <b>686</b> Apt Elev <b>691</b>	<b>4002</b>
--	------------------------	---	-------------

# RNAV (GPS) RWY 18

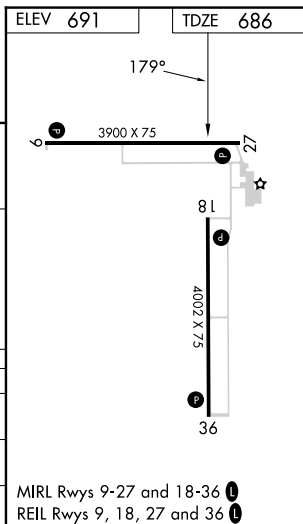
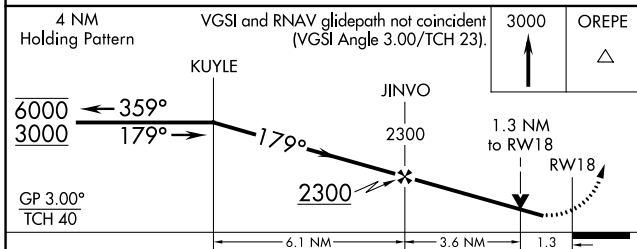
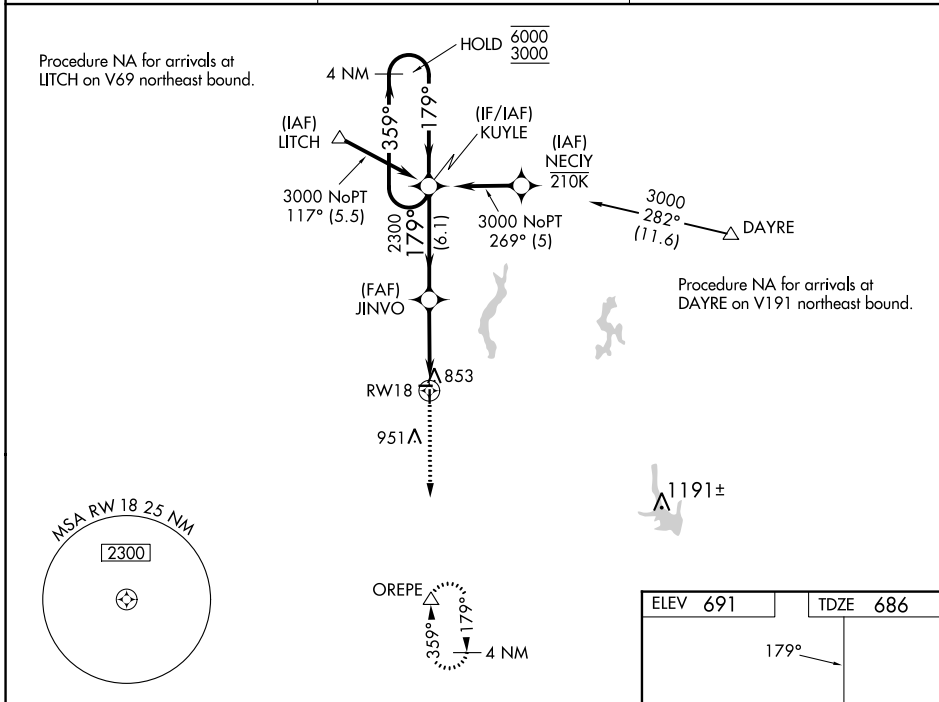
LITCHFIELD MUNI (3LF')

RNP APCH - GPS.

**⚠** Baro-VNAV and VDP NA when using Taylorville altimeter setting. Rwy 18 helicopter visibility reduction below  $\frac{3}{4}$  SM NA. For uncompensated Baro-VNAV systems, LNAV/VNAV NA below -16°C or above 54°C. When local altimeter setting not received, use Taylorville altimeter setting and increase LPV DA to 1025 feet and all visibilities  $\frac{1}{8}$  SM, increase LNAV/VNAV DA to 1146 feet and all visibilities  $\frac{1}{4}$  SM, increase all MDAs 80 feet and LNAV visibility Cat C  $\frac{1}{8}$  SM.

MISSED APPROACH: Climb to 3000 direct OREPE and hold.

AWOS-3PT <b>118.175</b>	ST. LOUIS APP CON <b>124.2 353.9</b>	UNICOM <b>122.8 (CTAF) 0</b>
----------------------------	---	---------------------------------



CATEGORY	A	B	C	D
LPV DA	952- $\frac{7}{8}$ 266 (300- $\frac{7}{8}$ )			NA
LNAV/VNAV DA	1073-1 $\frac{1}{8}$ 387 (400-1 $\frac{1}{8}$ )			NA
LNAV MDA	1120-1 434 (500-1)		1120-1 $\frac{1}{4}$ 434 (500-1 $\frac{1}{4}$ )	

MIRL Rwy 9-27 and 18-36 **0**  
REIL Rwy 9, 18, 27 and 36 **0**

EC-3, 16 MAY 2024 to 13 JUN 2024

EC-3, 16 MAY 2024 to 13 JUN 2024