

| | | | |
|--|------------------------|-----------------------------|---|
| WAAS CH 60935 W18A | APP CRS 177° | Rwy Idg TDZE Apt Elev | 3998 415 415 |
|--|------------------------|-----------------------------|---|

RNAV (GPS) RWY 18

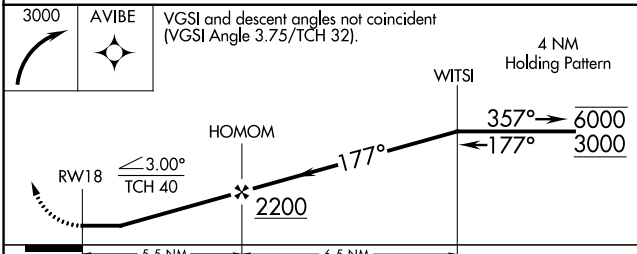
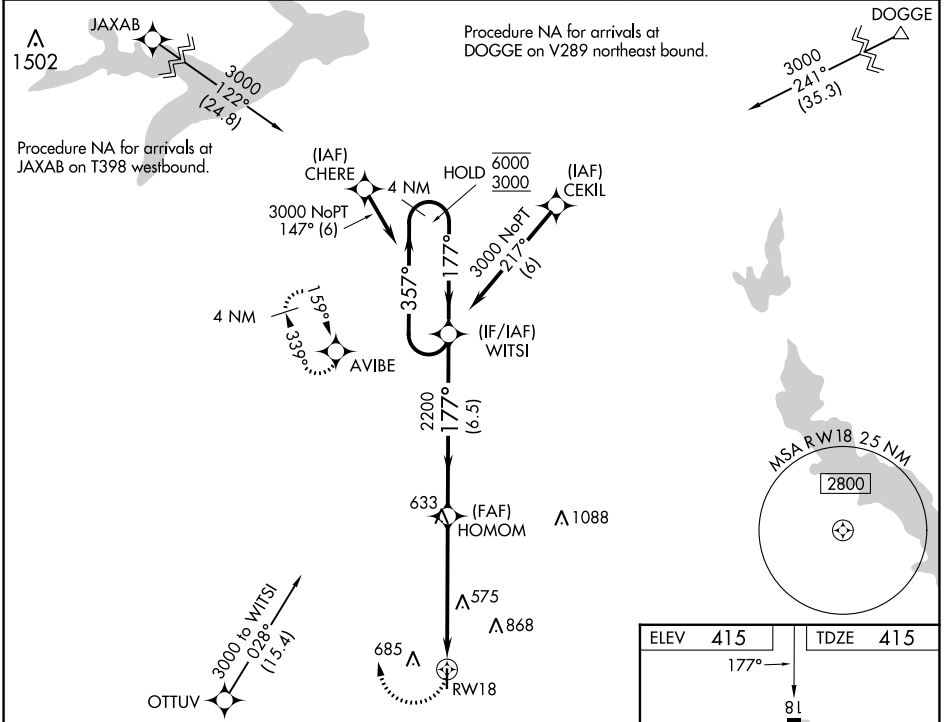
FOX STEPHENS FLD/GILMER MUNI (JXI)

RNP APCH - GPS.

▼ Procedure NA at night. Rwy 18 helicopter visibility reduction below 1 SM NA. When local altimeter setting not received, use Longview altimeter setting and increase all MDA 60 feet and increase LP, LNAV, and Circling Cat C visibility 1/4 SM.

▲ MISSED APPROACH: Climbing right turn to 3000 direct AVIBE and hold.

| | | |
|----------------------------|--|----------------------|
| AWOS-3PT 120.250 | LONGVIEW APP CON ★ 124.275 257.975 | CTAF 122.9 |
|----------------------------|--|----------------------|



| CATEGORY | A | B | C | D |
|------------|-----------------------|-----------------------|--|----|
| LP MDA | 820-1 | 405 (500-1) | 820-1 ¹ / ₈ 405 (500-1 ¹ / ₈) | NA |
| LNAV MDA | 880-1 | 465 (500-1) | 880-1 ³ / ₈ 465 (500-1 ³ / ₈) | NA |
| ◻ CIRCLING | 1000-1 585 (600-1) | 1060-1 645 (700-1) | 1180-2 ¹ / ₄ 765 (800-2 ¹ / ₄) | NA |

| | |
|-----------|----------|
| ELEV 415 | TDZE 415 |
| 177° → | |
| 81 | |
| 3998 X 60 | |
| 36 | |

MRL Rwy 18-36

SC-2, 16 MAY 2024 to 13 JUN 2024

SC-2, 16 MAY 2024 to 13 JUN 2024