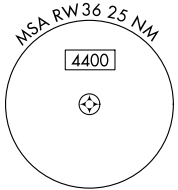
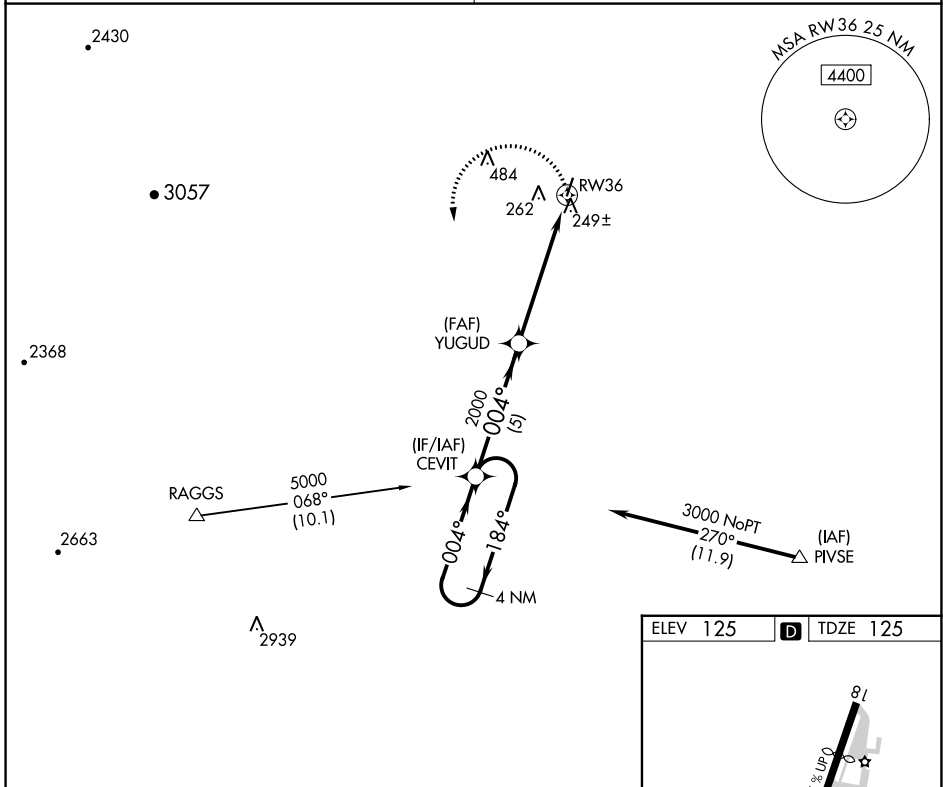


APP CRS <b>004°</b>	Rwy Idg <b>3244</b>
	TDZE <b>125</b>
	Apt Elev <b>125</b>

# RNAV (GPS) RWY 36

WATTS-WOODLAND (O41)

<p><b>NA</b> Procedure NA at night. Use Sacramento Intl altimeter setting; when not received, use Sacramento Exec altimeter setting and increase all MDA 20 feet.</p>	<p>MISSED APPROACH: Climbing left turn to 3000 direct CEVIT and hold.</p>
<p>TRAVIS APP CON <b>126.6 281.45</b></p>	<p>UNICOM <b>122.8 (CTAF)</b></p>



SW-2, 16 MAY 2024 to 13 JUN 2024

SW-2, 16 MAY 2024 to 13 JUN 2024

4 NM Holding Pattern	CEVIT	3000	CEVIT
←184°	→004°	004°	3.05° TCH 40
3000	2000	YUGUD	RW36
	5 NM	5.7 NM	
CATEGORY	A	B	C
RNAV MDA	560-1	435 (500-1)	NA
CIRCLING	620-1	495 (500-1)	NA

