

WAAS CH <b>86638</b> <b>W24A</b>	APP CRS <b>235°</b>	Rwy Idg <b>5500</b> TDZE <b>86</b> Apt Elev <b>99</b>
--	------------------------	---

# RNAV (GPS) RWY 24

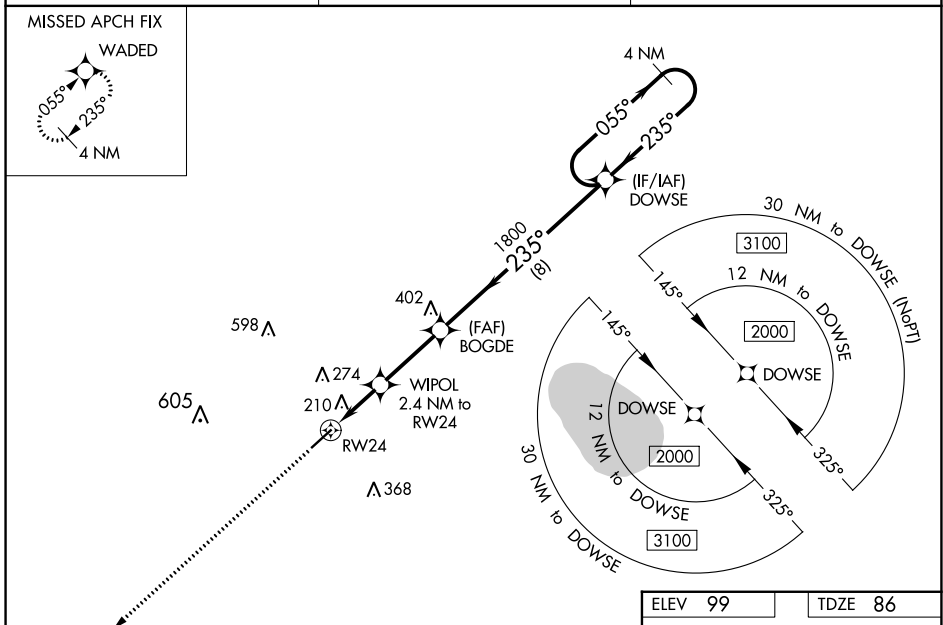
COLUMBUS COUNTY MUNI (CPC)

**RNP APCH.**

▼ For uncompensated Baro-VNAV systems, LNAV/VNAV NA below -15°C (5°F) or above 54°C (130°F). Baro-VNAV and VDP NA when using Elizabethtown altimeter setting.  
 ▲ Helicopter visibility reduction below ¾ SM NA. When local altimeter setting not received, use Elizabethtown altimeter setting and increase LPV DA to 427 feet, LNAV/VNAV DA to 441 feet and all visibilities ¼ mile. Increase all MDA 60 feet and all Cat C and D visibilities ¼ mile.

**MISSED APPROACH:**  
Climb to 2000 direct  
WADED and hold.

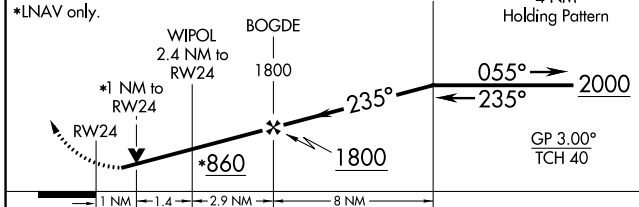
AWOS-3 <b>118.375</b>	MYRTLE BEACH APP CON * <b>119.2 350.3</b>	UNICOM <b>122.8 (CTAF) 0</b>
--------------------------	--	---------------------------------



SE-2, 16 MAY 2024 to 13 JUN 2024

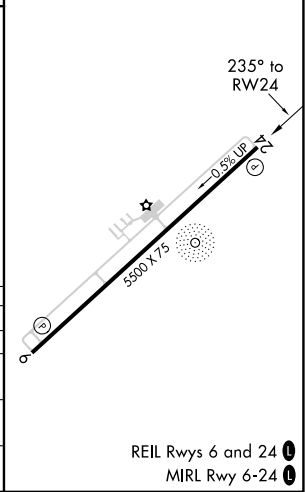
SE-2, 16 MAY 2024 to 13 JUN 2024

2000	WADED	VGSI and RNAV glidepath not coincident (VGSI Angle 3.25/TCH 42).
------	-------	--



CATEGORY	A	B	C	D
LPV DA		374-1	288 (300-1)	
LNAV/VNAV DA		388-1½	302 (300-1½)	
LNAV MDA		460-1	374 (400-1)	
CIRCLING	520-1	580-1	680-1½	780-2¼
	421 (500-1)	481 (500-1)	581 (600-1½)	681 (700-2¼)

ELEV 99	TDZE 86
---------	---------



REIL Rws 6 and 24 0  
MIRL Rwy 6-24 0