

VORTAC TNP 114.2 Chan 89	APP CRS 264°	Rwy Idg 5531 TDZE 1835 Apt Elev 1888
--	------------------------	---

VOR RWY 26

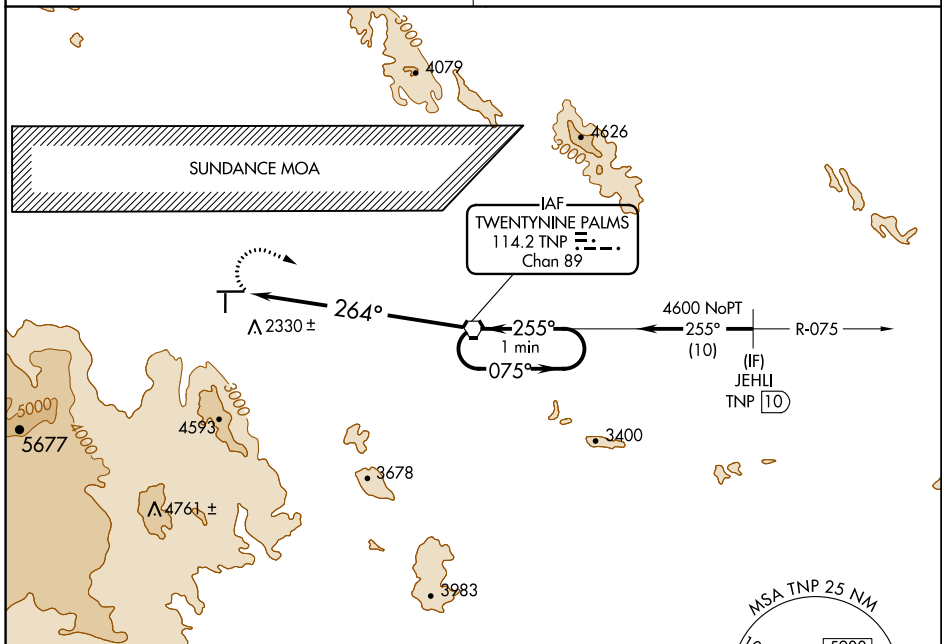
TWENTYNINE PALMS (TNP)

NA When Palm Springs Intl altimeter setting not received, procedure NA. Circling NA south of Rwy 8-26. Use Palm Springs Intl altimeter setting. Circling Rwy 8 NA at night.

MISSED APPROACH: Climbing right turn to 5900 direct TNP VORTAC and hold, continue climb-in-hold to 5900.

LOS ANGELES CENTER
128.15 285.6

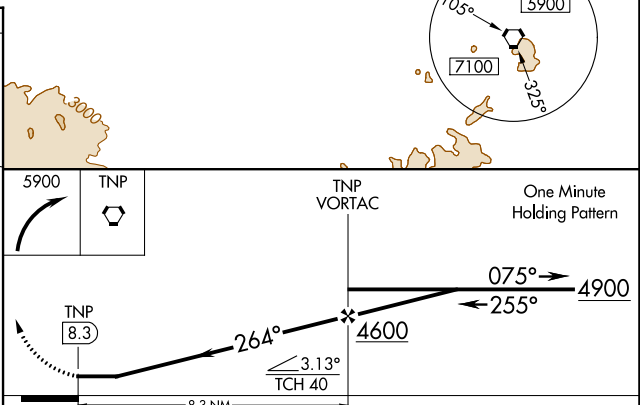
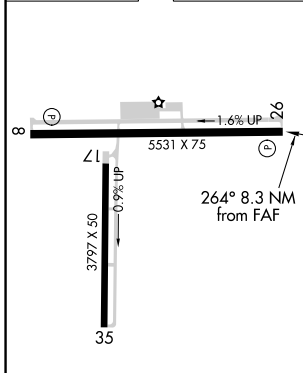
AUNICOM
122.8 (CTAF) 0



SW-3, 16 MAY 2024 to 13 JUN 2024

SW-3, 16 MAY 2024 to 13 JUN 2024

ELEV 1888	TDZE 1835
-----------	-----------



REL Rws 8 and 26 0
MIRL Rws 8-26 and 17-35 0
FAF to MAP 8.3 NM

Knots	60	90	120	150	180
Min:Sec	8:18	5:32	4:09	3:19	2:46

CATEGORY	A	B	C	D
S-26	3580-1¼ 1745 (1700-1¼)	3580-1½ 1745 (1700-1½)	NA	
C CIRCLING	3580-1¼ 1692 (1700-1¼)	3580-1½ 1692 (1700-1½)	NA	