

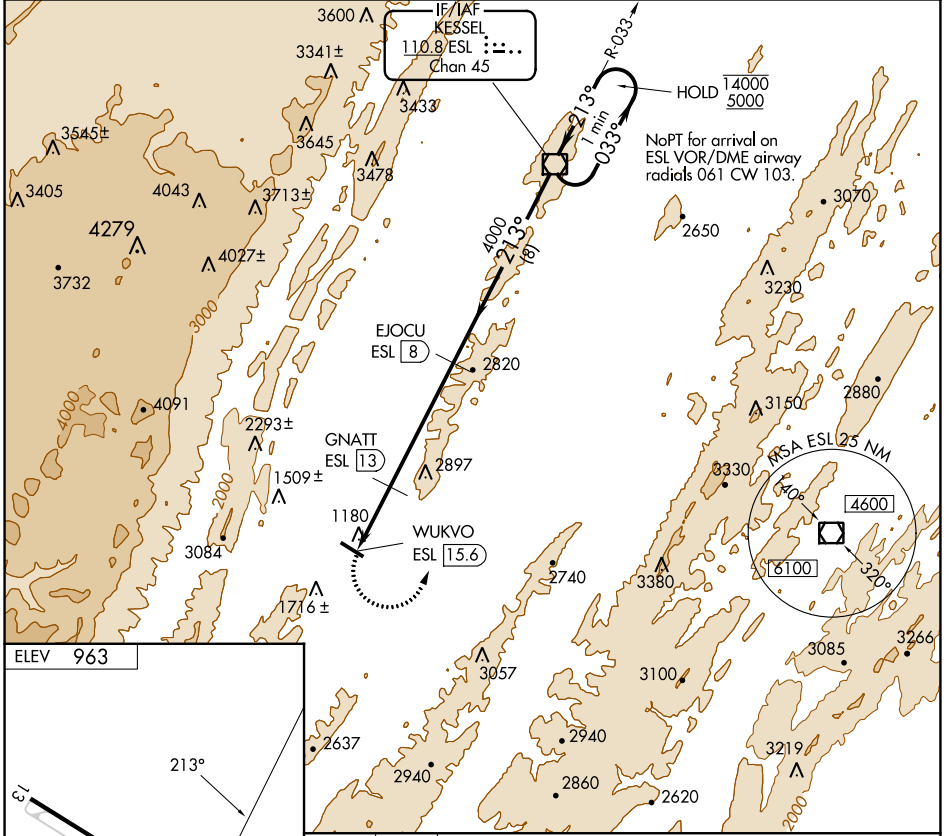
| | | |
|---|------------------------|---|
| VOR/DME ESL 110.8 Chan 45 | APP CRS 213° | Rwy Idg TDZE Apt Elev N/A N/A 963 |
|---|------------------------|---|

VOR/DME-A

GRANT COUNTY (W99)

MISSED APPROACH: Climbing left turn to 5000 direct ESL VOR/DME and hold.

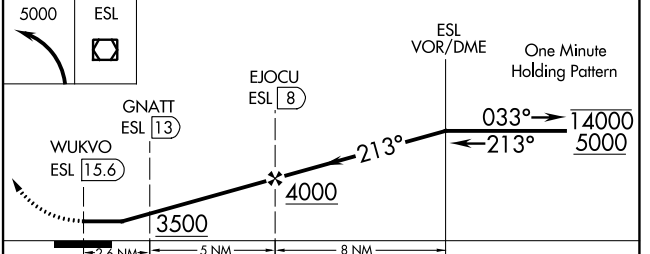
| | | |
|--------------------------|---|-------------------------------|
| AWOS-3 124.475 | WASHINGTON CENTER 133.55 322.55 | UNICOM 122.8 (CTAF) |
|--------------------------|---|-------------------------------|



ELEV 963

REIL Rws 13 and 31
MIRL Rwy 13-31

The diagram shows a runway layout with Runway 13 and Runway 31. Runway 13 is 5000 feet long with a 0.3% upward slope. Runway 31 is 5000 feet long. The angle between the runways is 213 degrees.



| CATEGORY | A | B | C | D |
|----------|---------------------------|---------------------------|----|---|
| CIRCLING | 3100-1¼ 2137 (2200-1¼) | 3100-1½ 2137 (2200-1½) | NA | |

NE-4, 16 MAY 2024 to 13 JUN 2024

NE-4, 16 MAY 2024 to 13 JUN 2024