

BOLINGBROOK, ILLINOIS

AL-6535 (FAA)

23054

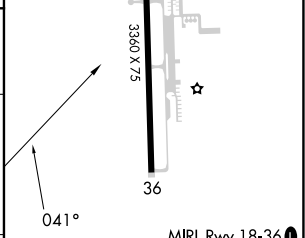
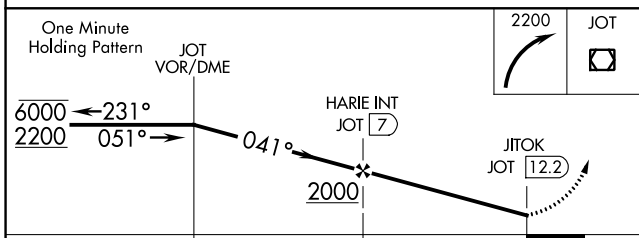
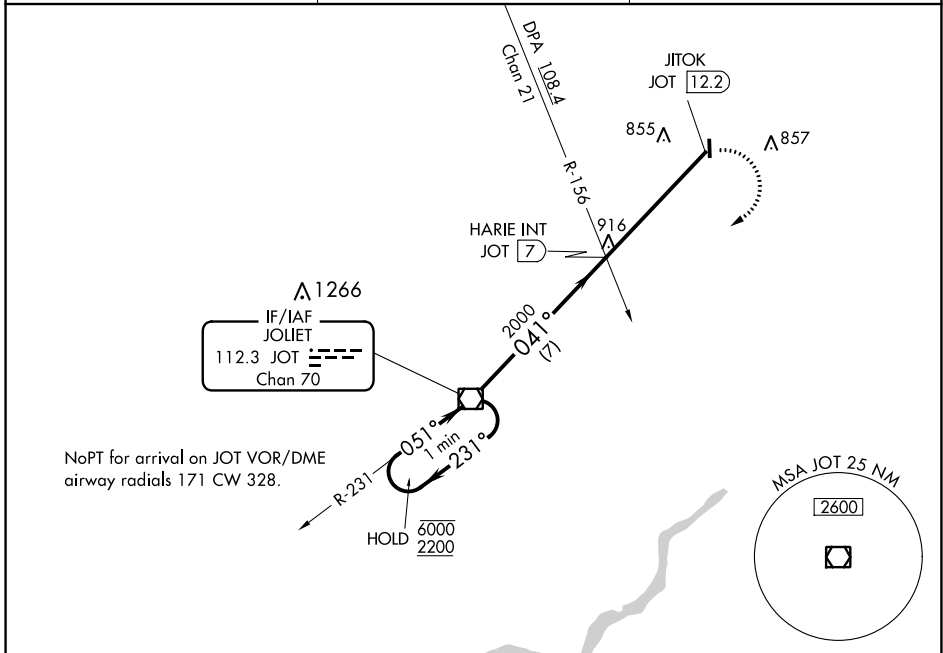
VOR/DME JOT 112.3 Chan 70	APP CRS 041°	Rwy Idg TDZE Apt Elev	N/A N/A 675
---	------------------------	-----------------------------	--

VOR-A

BOLINGBROOK'S CLOW INTL (1C5)

NA Procedure NA at night. Use Lewis University altimeter setting.	MISSED APPROACH: Climbing right turn to 2200 direct JOT VOR/DME and hold.
--	---

LOT AWOS-3PT 126.675	CHICAGO APP CON 119.35 354.075	CTAF 122.9
--------------------------------	--	----------------------



CATEGORY	A	B	C	D	FAF to MAP 5.2 NM					
CIRCLING	1180-1 505 (600-1)	1220-1 545 (600-1)	NA		Knots	60	90	120	150	180
					Min:Seq	5:12	3:28	2:36	2:05	1:44

BOLINGBROOK, ILLINOIS
Amdt 1B 15AUG19

41°42'N - 88°08'W

BOLINGBROOK'S CLOW INTL (1C5)

VOR-A

EC-3, 16 MAY 2024 to 13 JUN 2024

EC-3, 16 MAY 2024 to 13 JUN 2024