

| | | | |
|--|------------------------|-----------------------------|---|
| WAAS CH 97532 W16A | APP CRS 164° | Rwy Idg TDZE Apt Elev | 4500 1299 1304 |
|--|------------------------|-----------------------------|---|

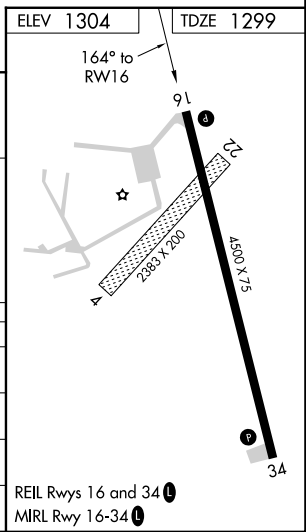
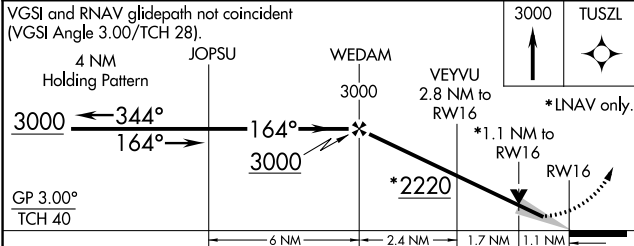
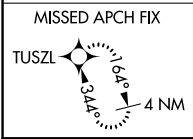
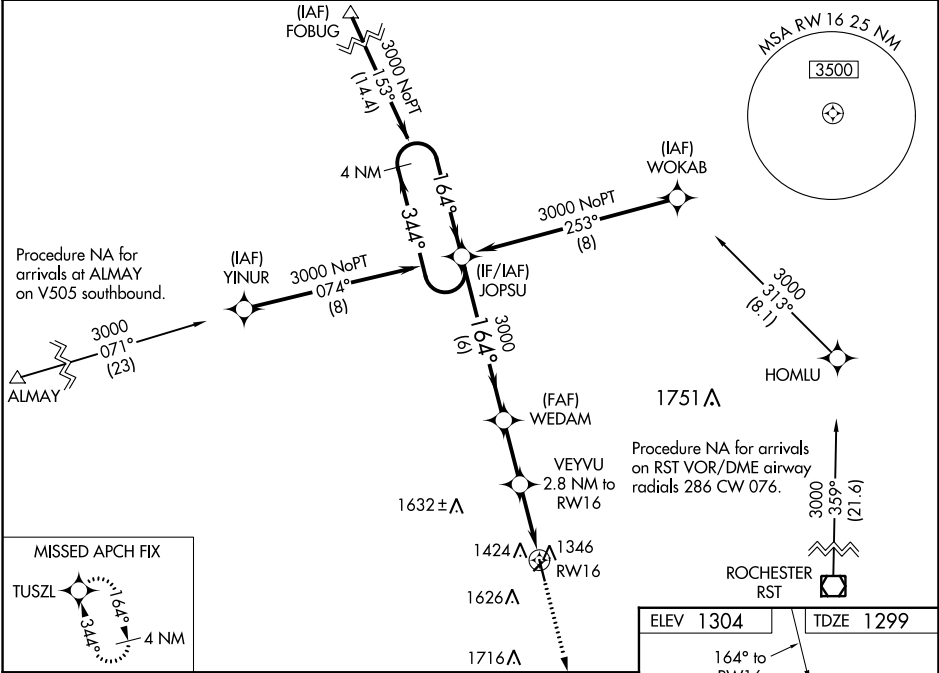
RNAV (GPS) RWY 16

DODGE CENTER (TOB)

⚠ For uncompensated Baro-VNAV systems, LNAV/VNAV NA below -17°C (2°F) or above 54°C (130°F). DME/DME RNP-0.3 NA. Baro-VNAV and VDP NA with Rochester Intl altimeter setting. When local altimeter setting not received, use Rochester Intl altimeter setting and increase all DA 39 feet and all MDA 40 feet, and increase LNAV/VNAV all Cats, LNAV Cat C visibility 1/8 mile, and Circling Cat C visibility 1/4 mile.

MISSED APPROACH: Climb to 3000 direct TUSZL and hold.

| | | |
|--------------------------|--|----------------------|
| AWOS-3 119.075 | ROCHESTER APP CON* 119.8 251.125 | CTAF 122.9 |
|--------------------------|--|----------------------|



| CATEGORY | A | B | C | D |
|--------------|--------------------|--------------------|----------------------------|----|
| LPV DA | | 1549-1 250 (300-1) | | NA |
| LNAV/VNAV DA | | 1586-1 287 (300-1) | | NA |
| LNAV MDA | 1680-1 381 (400-1) | | 1680-1 1/8 381 (400-1 1/8) | NA |
| CIRCLING | 1960-1 656 (700-1) | | 1960-1 3/4 656 (700-1 3/4) | NA |

NC-1, 16 MAY 2024 to 13 JUN 2024

NC-1, 16 MAY 2024 to 13 JUN 2024