

WAAS CH <b>49224</b> <b>W14A</b>	APP CRS <b>136°</b>	Rwy Idg TDZE <b>5322</b> <b>5736</b> Apt Elev <b>5737</b>
--	------------------------	--

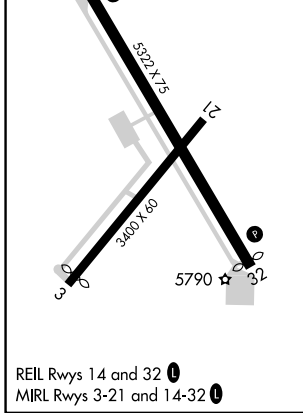
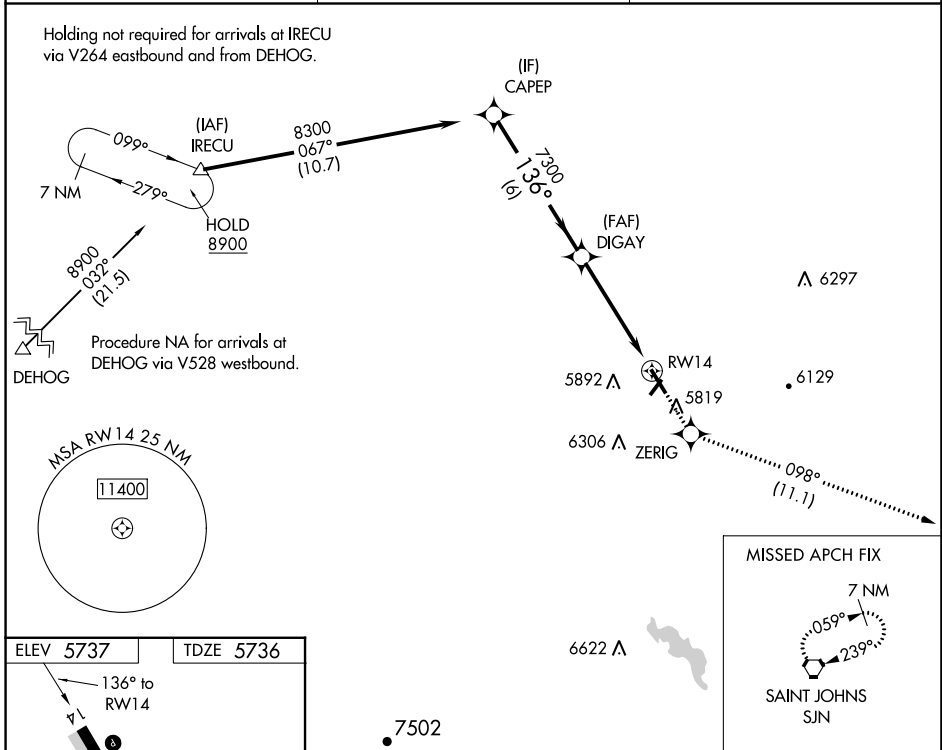
# RNAV (GPS) RWY 14

ST JOHNS INDUSTRIAL AIR PARK (SJJN)

**⚠** Night landing Rwy 3, 32 NA. When local altimeter setting not received, use Show Low altimeter setting and increase all MDA 180 feet. DME/DME RNP-0.3 NA. Helicopter visibility reduction below 3/4 SM NA. VDP NA with Show Low altimeter setting.

MISSED APPROACH: Climb to 9000 direct ZERIG and on track 098° to SJJN VORTAC and hold, continue climb-in-hold to 9000.

ASOS <b>134.225</b>	ALBUQUERQUE CENTER <b>124.325 288.25</b>	UNICOM <b>122.8 (CTAF) 0</b>
------------------------	---	---------------------------------



		9000	ZERIG	tr 098°	SJJN
CAPEP		8300	DIGAY	1.2 NM to RW14	
		7300		3.00° TCH 40	
		6 NM	3.6 NM	1.2 NM	
CATEGORY	A	B	C	D	
LP MDA	6140-1	404 (500-1)		NA	
LNAV MDA	6140-1	404 (500-1)		NA	
CIRCLING	6260-1 523 (600-1)	6280-1 543 (600-1)		NA	

SW-4, 16 MAY 2024 to 13 JUN 2024

SW-4, 16 MAY 2024 to 13 JUN 2024