

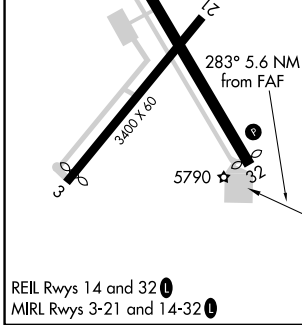
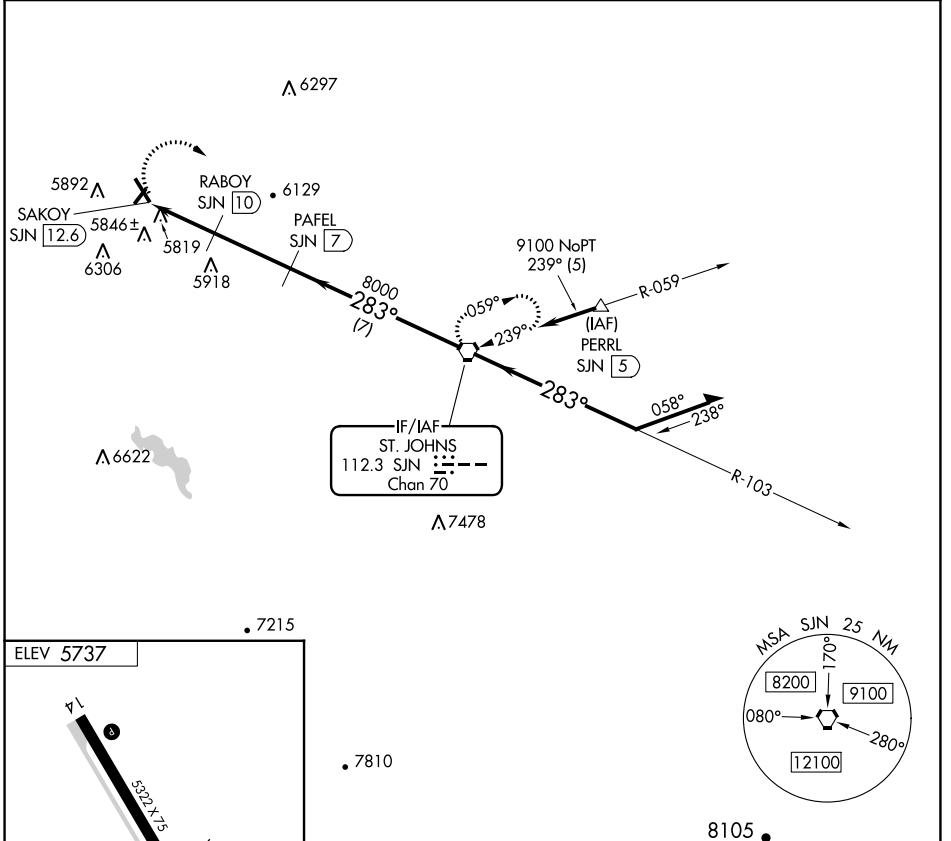
VORTAC SJN <b>112.3</b> Chan <b>70</b>	APP CRS <b>283°</b>	Rwy Idg TDZE Apt Elev	<b>N/A</b> <b>N/A</b> <b>5737</b>
--	------------------------	-----------------------------	---

# VOR-A

ST JOHNS INDUSTRIAL AIR PARK (SJN)

DME required.	MISSED APPROACH: Climbing right turn to 9100 direct SJN VORTAC and hold, continue climb-in-hold to 9100.
<b>▽</b> <b>▲</b>	Circling Rwy 3, 32 NA at night.

ASOS <b>134.225</b>	ALBUQUERQUE CENTER <b>124.325 288.25</b>	UNICOM <b>122.8 (CTAF)</b> <b>📞</b>
------------------------	---	--



9100	SJN	PAFEL SJN 7	SJN VORTAC	Remain within 10 NM
SAKOY SJN 12.6	RABOY SJN 10	8000	9100	9100
2.6 NM	3 NM	7 NM	103°	283°
283° 5.6 NM from FAF				
CATEGORY	A	B	C	D
<b>📞</b> CIRCLING	6260-1 523 (600-1)	6280-1 543 (600-1)	NA	

ST JOHNS, ARIZONA  
Amdt 3 17JUN21

34°31'N-109°23'W

ST JOHNS INDUSTRIAL AIR PARK (SJN)  
**VOR-A**

SW-4, 16 MAY 2024 to 13 JUN 2024

SW-4, 16 MAY 2024 to 13 JUN 2024