

WAAS CH <b>78324</b> <b>W05A</b>	APP CRS <b>049°</b>	Rwy Idg TDZE Apt Elev	<b>3914</b> <b>2586</b> <b>2586</b>
--	------------------------	-----------------------------	---

# RNAV (GPS) RWY 5

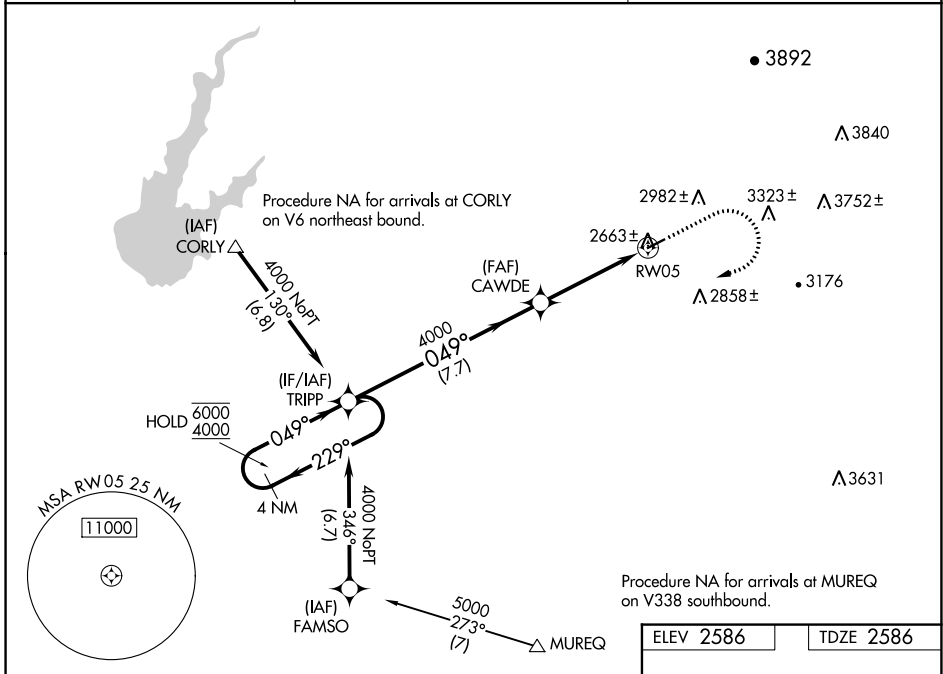
PLACERVILLE (P.V.F.)

RNP APCH - GPS.

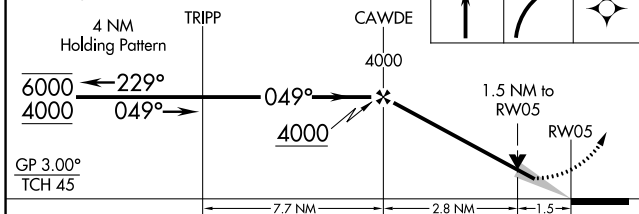
**⚠** Circling NA northwest of Rwy 5-23. For uncompensated Baro-VNAV systems, LNAV/VNAV NA below -20°C or above 54°C.

**⚠** MISSED APPROACH: Climb to 3200 then climbing right turn to 4500 direct TRIPP and hold.

AWOS-3 <b>128.125</b>	NORCAL APP CON <b>127.4 317.5</b>	UNICOM <b>122.8 (CTAF)</b>
--------------------------	--------------------------------------	-------------------------------

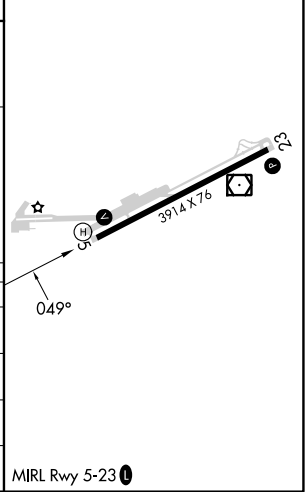


VGSI and RNAV glidepath not coincident (VGSI Angle 3.00/TCH 22).



ELEV 2586	TDZE 2586
-----------	-----------

CATEGORY	A	B	C	D
LPV DA	2966-1	380 (400-1)		NA
LNAV/VNAV DA	2970-1½	384 (400-1½)		NA
LNAV MDA	3080-1	494 (500-1)		NA
CIRCLING	3180-1 594 (600-1)	3440-1¼ 854 (900-1¼)		NA



SW-2, 16 MAY 2024 to 13 JUN 2024

SW-2, 16 MAY 2024 to 13 JUN 2024