

RNAV (GPS) RWY 16

ANSON COUNTY/JEFF CLOUD FLD (A/F P)

| | | |
|-------------|----------|-------------|
| APP CRS | Rwy Idg | 5498 |
| 162° | TDZE | 300 |
| | Apt Elev | 300 |

RNP APCH - GPS.

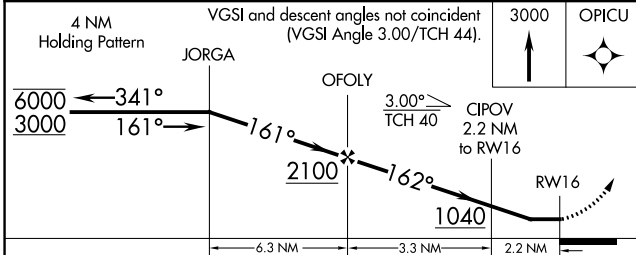
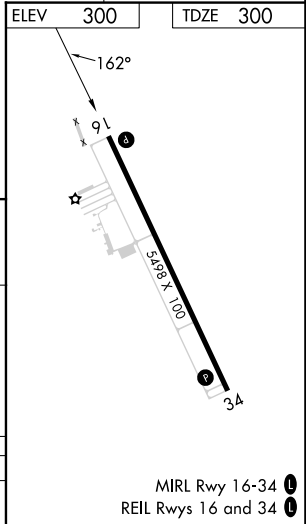
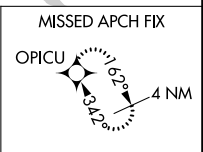
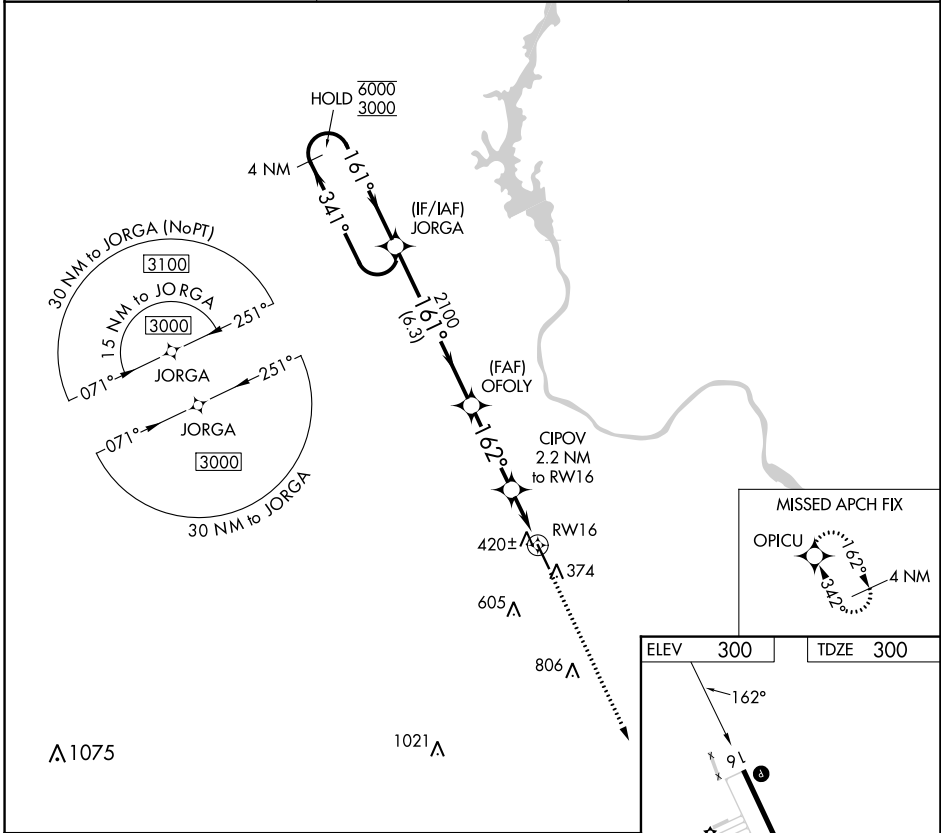
▼ Procedure NA at night.
▲ Rwy 16 helicopter visibility reduction below 1 SM NA.

MISSED APPROACH: Climb to 3000 direct OPICU and hold.

AWOS-3
119.325

CHARLOTTE APP CON
120.05 307.8

UNICOM
122.8 (CTAF) 0



| | | | | |
|----------|---|-------|-------------|---|
| CATEGORY | A | B | C | D |
| LNAV MDA | | 680-1 | 380 (400-1) | |

MIRL Rwy 16-34
 REIL Rwy 16 and 34

SE-2, 16 MAY 2024 to 13 JUN 2024

SE-2, 16 MAY 2024 to 13 JUN 2024