

WAAS CH 69408 W34A	APP CRS 342°	Rwy Idg TDZE Apt Elev	5498 299 300
--	------------------------	-----------------------------	---

RNAV (GPS) RWY 34

ANSON COUNTY/JEFF CLOUD FLD (A/F/P)

RNP APCH - GPS.

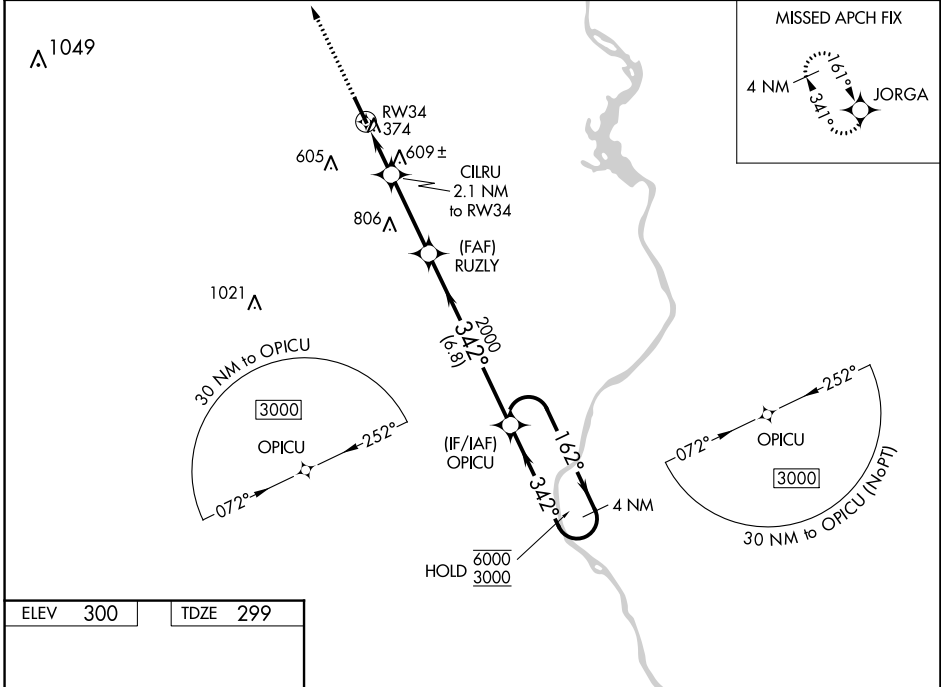
⚠
 For uncompensated Baro-VNAV systems, procedure NA below -15°C or above 42°C. Rwy 34 helicopter visibility reduction below ¾ SM NA.

MISSED APPROACH: Climb to 3000 direct JORGA and hold.

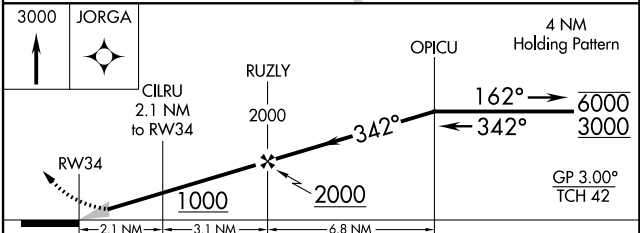
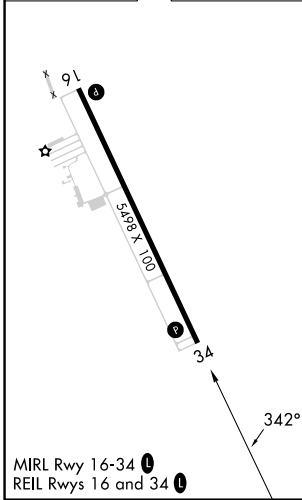
AWOS-3
119.325

CHARLOTTE APP CON
120.05 307.8

UNICOM
122.8 (CTAF) 0



ELEV 300	TDZE 299
----------	----------



CATEGORY	A	B	C	D
LPV DA	649-1		350 (400-1)	
LNAV/VNAV DA	957-1 7/8		658 (700-1 1/8)	
LNAV MDA	860-1	561 (600-1)	860-1 5/8	561 (600-1 5/8)
CIRCLING	860-1	560 (600-1)	1080-2 1/4 780 (800-2 1/4)	1080-2 1/2 780 (800-2 1/2)

SE-2, 16 MAY 2024 to 13 JUN 2024

SE-2, 16 MAY 2024 to 13 JUN 2024