

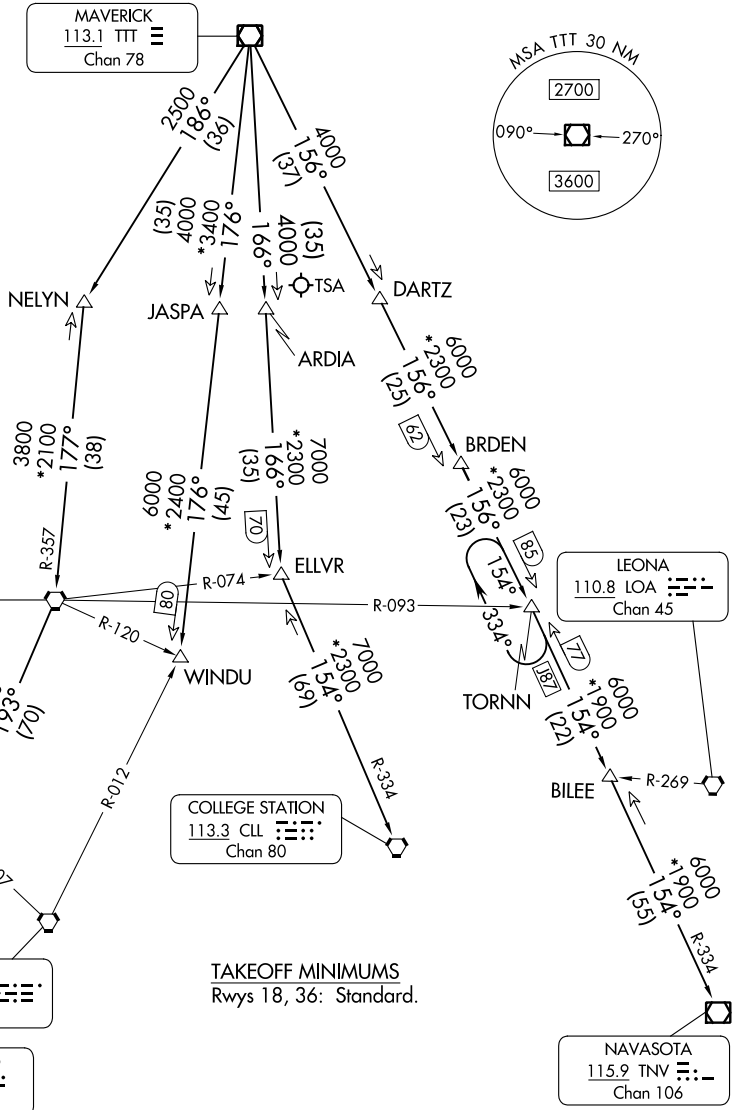
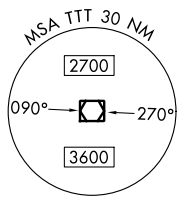
JOE POOL SEVEN DEPARTURE

REGIONAL DEP CON
124.3 282.275
CLNC DEL (when twr closed)
121.35
GND CON
121.875
MC KINNEY TOWER★
118.825 (CTAF)

RADAR and DME required.

**TOP ALTITUDE:
ASSIGNED BY ATC**

MAVERICK
113.1 TTT
Chan 78



TAKEOFF MINIMUMS
Rwys 18, 36: Standard.

(CONTINUED ON FOLLOWING PAGE)

NOTE: Chart not to scale.

SC-2, 16 MAY 2024 to 13 JUN 2024

SC-2, 16 MAY 2024 to 13 JUN 2024

JOE POOL SEVEN DEPARTURE