

NANDR TWO DEPARTURE (RNAV)

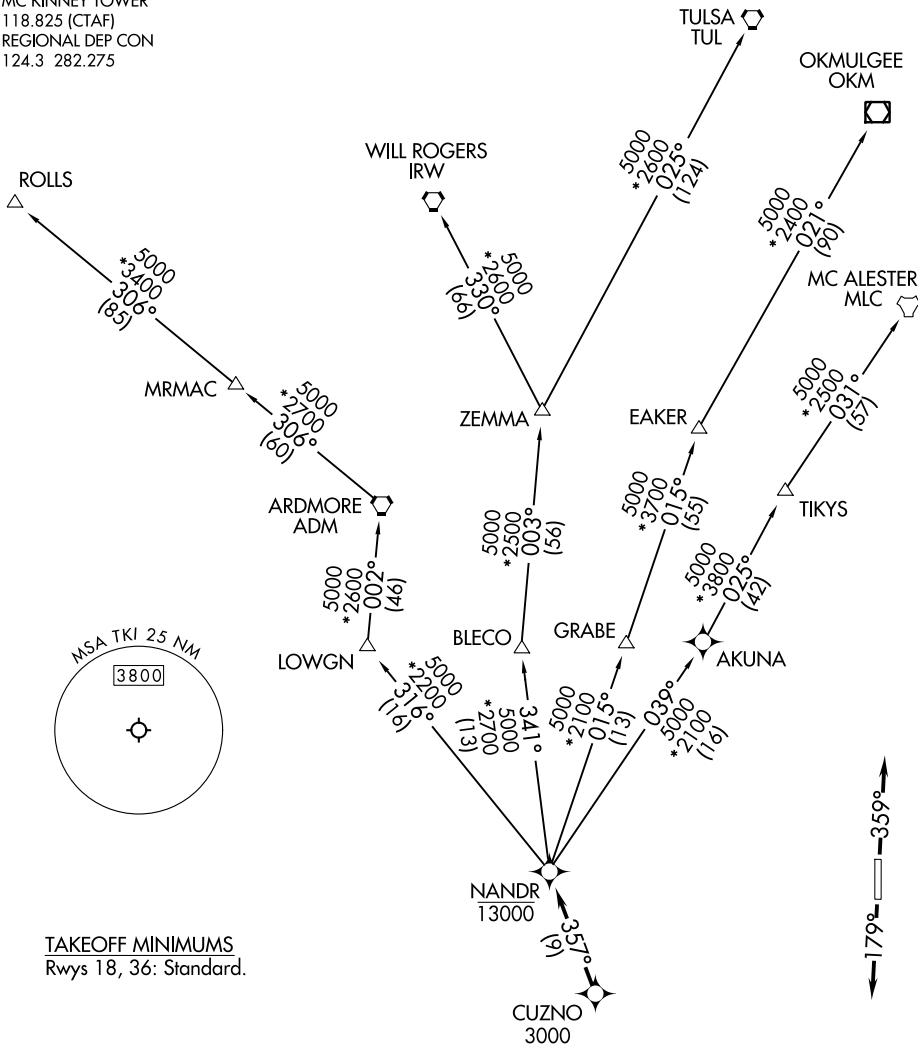
DALLAS, TEXAS

CLNC DEL (when twr closed)
 121.35
 GND CON
 121.875
 MC KINNEY TOWER*
 118.825 (CTAF)
 REGIONAL DEP CON
 124.3 282.275

RNAV 1 - DME/DME/IRU or GPS.

RADAR required.

**TOP ALTITUDE:
ASSIGNED BY ATC**



TAKEOFF MINIMUMS
 Rwy 18, 36: Standard.

NOTE: EAKER transition: For TUL terminal arrivals only.
 NOTE: TULSA transition: For all aircraft overflying TUL VORTAC.
 NOTE: Aircraft arriving to the Oklahoma City terminal area,
 file and expect the ZEMMA enroute transition.

NOTE: Chart not to scale.

(NARRATIVE ON FOLLOWING PAGE)

NANDR TWO DEPARTURE (RNAV)

(NANDR2.NANDR) 20APR23

DALLAS, TEXAS
MCKINNEY NTL (TKI)

SC-2, 16 MAY 2024 to 13 JUN 2024

SC-2, 16 MAY 2024 to 13 JUN 2024