

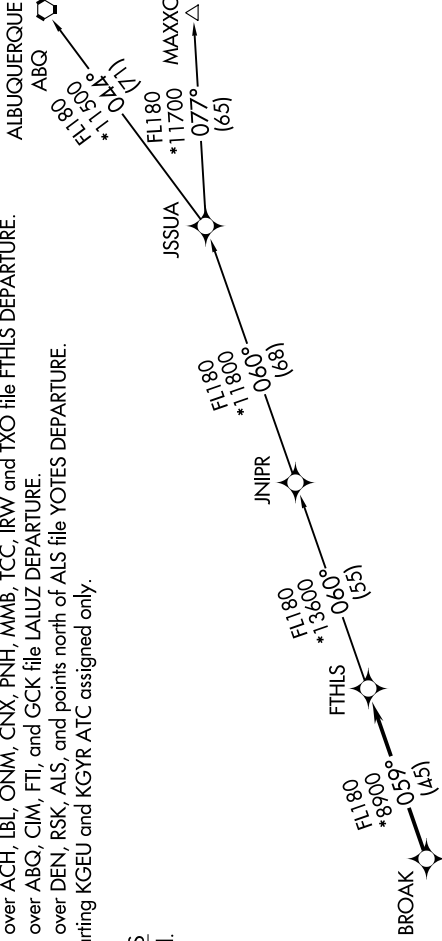
SW-4, 16 MAY 2024 to 13 JUN 2024

ATIS  
118.35  
GND CON  
121.7  
GOODYEAR TOWER ★  
120.1 239.3  
LUKE DEP CON ★  
125.45 263.125  
PHOENIX DEP CON  
120.7 239.0

NOTE: RNAV 1.  
NOTE: Turbojets and turboprops only.  
NOTE: RADAR required.  
NOTE: GPS required.  
NOTE: ABQ transition ATC assigned only.  
NOTE: Aircraft filing over ACH, LBL, ONM, CNX, PNH, MMB, TCC, IRW, and TXO file FTHLS DEPARTURE.  
NOTE: Aircraft filing over ABQ, CIM, FTI, and GCK file LALUZ DEPARTURE.  
NOTE: Aircraft filing over DEN, RSK, ALS, and points north of ALS file YOTES DEPARTURE.  
NOTE: Aircraft departing KGEU and KGYR ATC assigned only.

TAKEOFF MINIMUMS  
Rwys 3, 21: Standard.

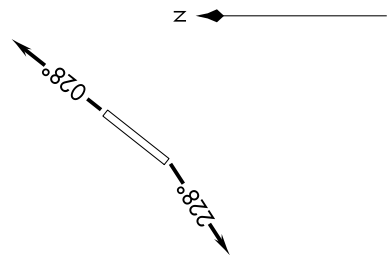
**TOP ALTITUDE:  
ASSIGNED BY ATC**



**DEPARTURE ROUTE DESCRIPTION**

TAKEOFF RUNWAY 3: Climb heading 028° or as assigned by ATC, thence, . . .  
TAKEOFF RUNWAY 21: Climb heading 228° or as assigned by ATC, thence, . . .  
. . . expect RADAR vectors to BROAK, then on track 059° to FTHLS, then on (transition).  
Maintain ATC assigned altitude, expect filed altitude 3 minutes after departure.

ALBUQUERQUE TRANSITION (FTHLS6.ABQ)  
JNIPR TRANSITION (FTHLS6.JNIPR)  
MAXXO TRANSITION (FTHLS6.MAXXO)



NOTE: Chart not to scale.

SW-4, 16 MAY 2024 to 13 JUN 2024