

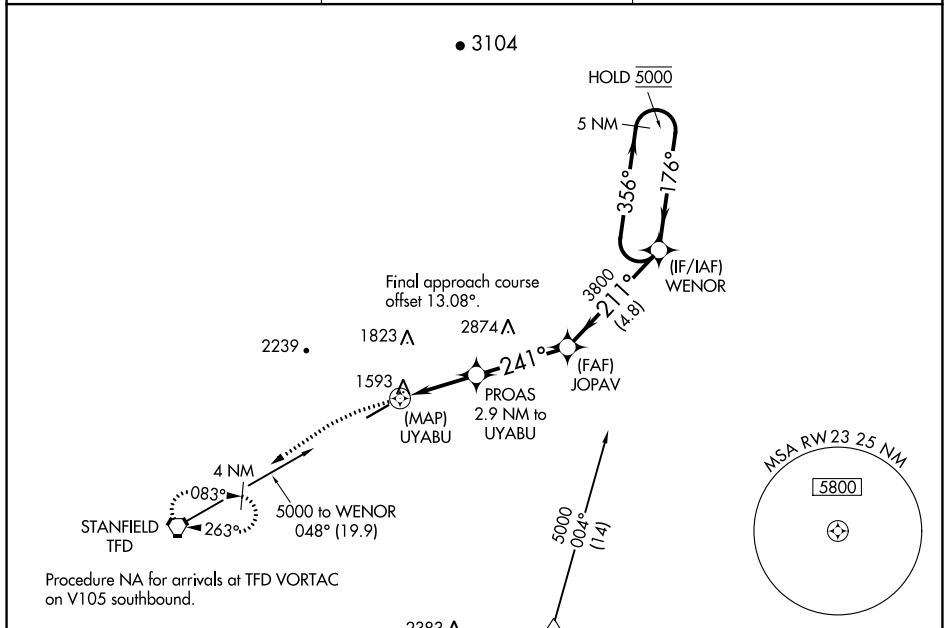
APP CRS <b>241°</b>	Rwy Idg <b>5200</b>
	TDZE <b>1464</b>
	Apt Elev <b>1464</b>

# RNAV (GPS) RWY 23

CASA GRANDE MUNI (CGZ)

RNP APCH-GPS.	MISSED APPROACH: Climbing left turn to 3500 direct TFD VORTAC and hold.
<p><b>▼</b> Rwy 23 helicopter visibility reduction below <math>\frac{3}{4}</math> SM NA.</p> <p><b>▲</b> Circling NA for Cat C and D northwest of Rwy 5-23.</p>	

AWOS-3PT <b>132.175</b>	ALBUQUERQUE CENTER <b>125.4 269.3</b>	UNICOM <b>122.7 (CTAF) 0</b>
----------------------------	--	---------------------------------

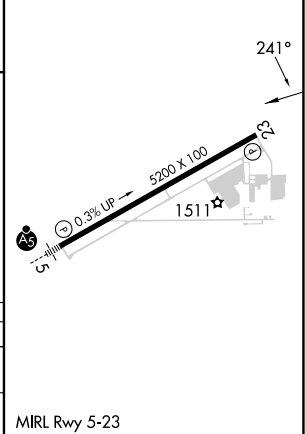


ELEV 1464	TDZE 1464
-----------	-----------

Procedure NA for arrivals at TFD VORTAC on V105 southbound.

Procedure NA for arrivals at TOTEC on V16/T306 southeast bound.

3500	TFD	PROAS 2.9 NM to UYABU	JOPAV	WENOR	5 NM Holding Pattern
		0.8 NM to UYABU	3.19° TCH 40	211°	356° → 5000
		2640	3800		← 176°
		2.1 NM	3.4 NM	4.8 NM	
CATEGORY	A	B	C	D	
LNAV MDA	1900-1	436 (500-1)	1900-1¼	436 (500-1¼)	
<b>C</b> CIRCLING	1960-1	496 (500-1)	1960-1½	2260-2½	796 (800-2½)



SW-4, 16 MAY 2024 to 13 JUN 2024

SW-4, 16 MAY 2024 to 13 JUN 2024