

NDB HQT	APP CRS	Rwy Idg	<b>5005</b>
<b>417</b>	<b>230°</b>	TDZE	<b>202</b>
		Apt Elev	<b>202</b>

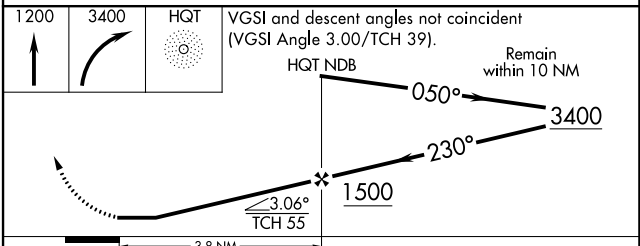
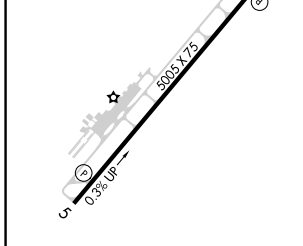
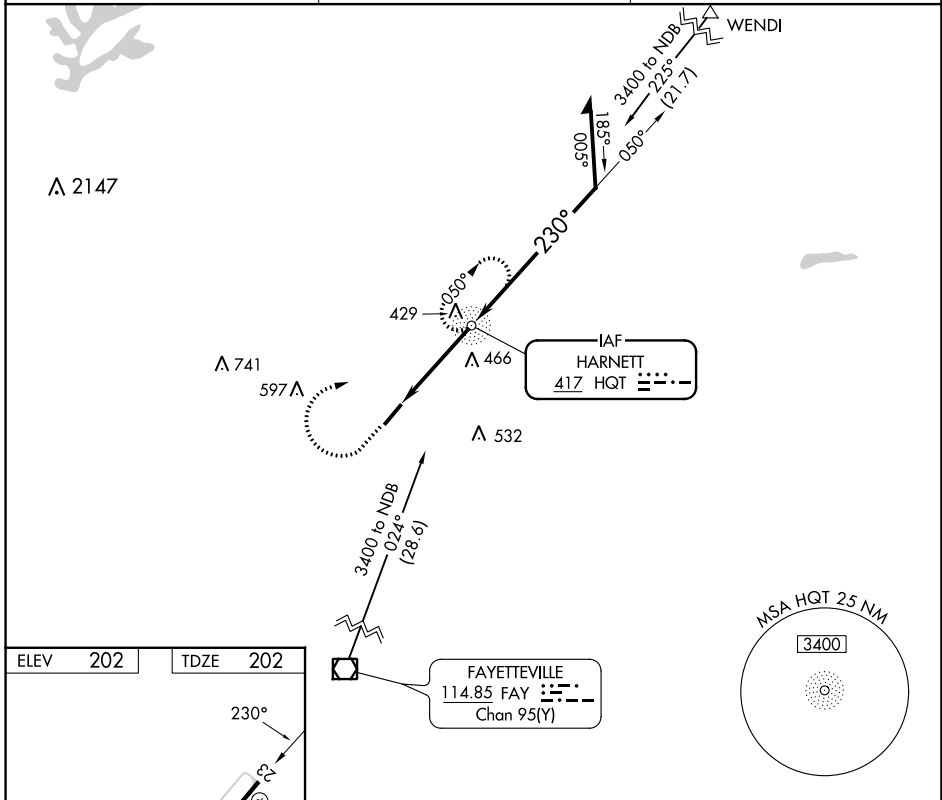
# NDB RWY 23

HARNETT RGNL JETPORT (H.R.J)

⚠ When local altimeter setting not received, use Smithfield altimeter setting and increase all MDA 60 feet, and S-23 and Circling Cat C visibility 1/8 mile. Helicopter visibility reduction below 3/4 SM NA.

MISSED APPROACH: Climb to 1200 then climbing right turn to 3400 direct HQT NDB and hold.

AWOS-3 <b>119.025</b>	FAYETTEVILLE APP CON <b>125.175 285.575</b>	UNICOM <b>122.7(CTAF) 0</b>
--------------------------	--	--------------------------------



REIL Rwy 5 and 23					
MIRL Rwy 5-23					
FAF to MAP 3.8 NM					
Knots	60	90	120	150	180
Min:Sec	3:48	2:32	1:54	1:31	1:16
CATEGORY	A	B	C	D	
S-23	780-1	578 (600-1)	780-1½ 578 (600-1½)	NA	
CIRCLING	780-1	578 (600-1)	780-1½ 578 (600-1½)	NA	

SE-2, 16 MAY 2024 to 13 JUN 2024

SE-2, 16 MAY 2024 to 13 JUN 2024