

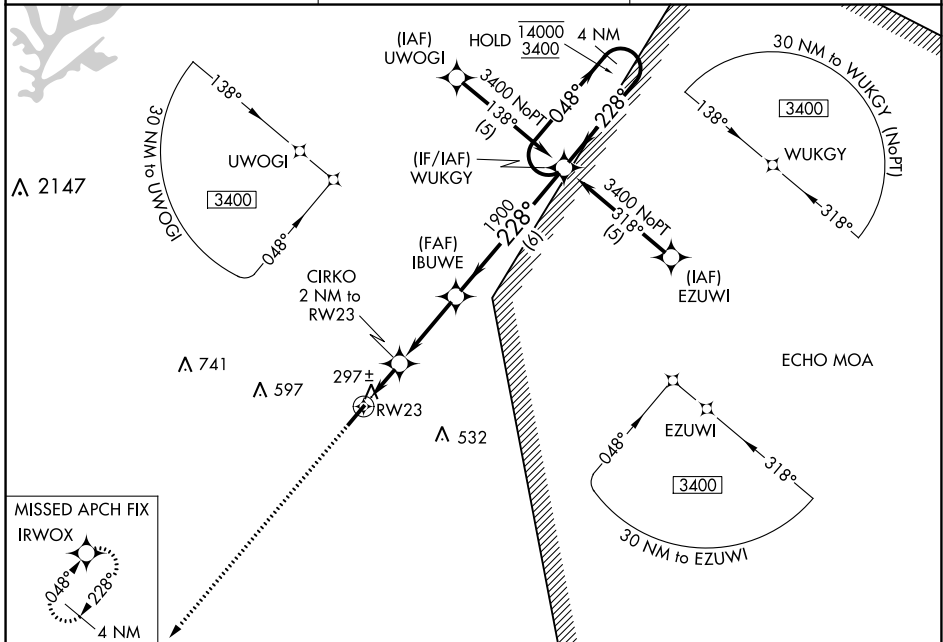
WAAS CH <b>45904</b> <b>W23A</b>	APP CRS <b>228°</b>	Rwy Idg TDZE Apt Elev	<b>5005</b> <b>202</b> <b>202</b>
--	------------------------	-----------------------------	---

# RNAV (GPS) RWY 23

HARNETT RGNL JETPORT (HRJ)

RNP APCH - GPS.	MISSED APPROACH: Climb to 2500 direct IRWOX and hold.
<p>▼ ▲ Rwy 23 helicopter visibility reduction below 3/4 SM NA.</p>	

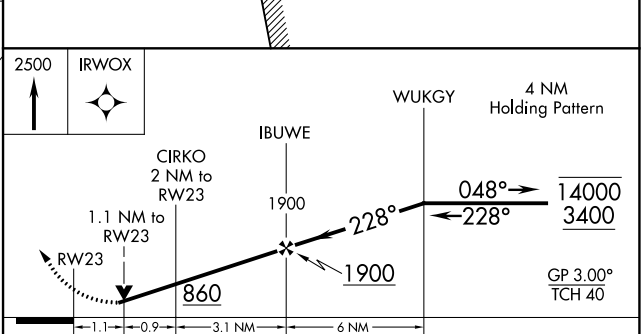
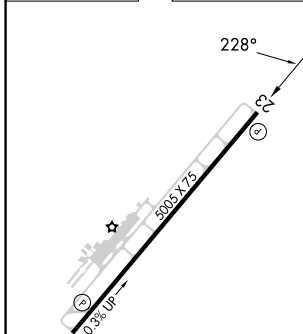
AWOS-3 <b>119.025</b>	FAYETTEVILLE APP CON <b>125.175 285.575</b>	UNICOM <b>122.7 (CTAF) 0</b>
--------------------------	--	---------------------------------



SE-2, 16 MAY 2024 to 13 JUN 2024

SE-2, 16 MAY 2024 to 13 JUN 2024

ELEV 202	TDZE 202
----------	----------



CATEGORY	A	B	C	D
LPV DA	551-1 349 (400-1)			NA
LNAV MDA	600-1	398 (400-1)	600-1 1/8 398 (400-1 1/8)	NA
<input checked="" type="checkbox"/> CIRCLING	660-1 458 (500-1)	720-1 518 (600-1)	780-1 1/2 578 (600-1 1/2)	NA

REIL Rwy 5 and 23 0  
MIRL Rwy 5-23 0