

WAAS CH <b>49117</b> <b>W04A</b>	APP CRS <b>043°</b>	Rwy Idg TDZE Apt Elev	<b>5499</b> <b>609</b> <b>609</b>
--	------------------------	-----------------------------	---

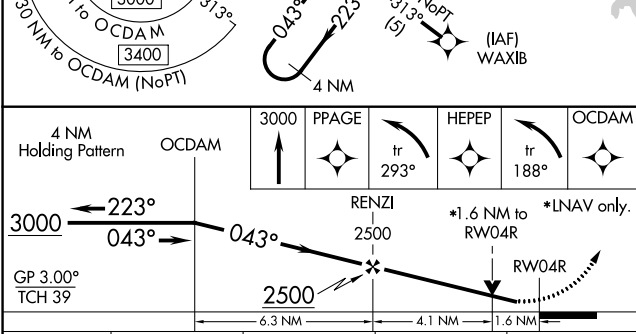
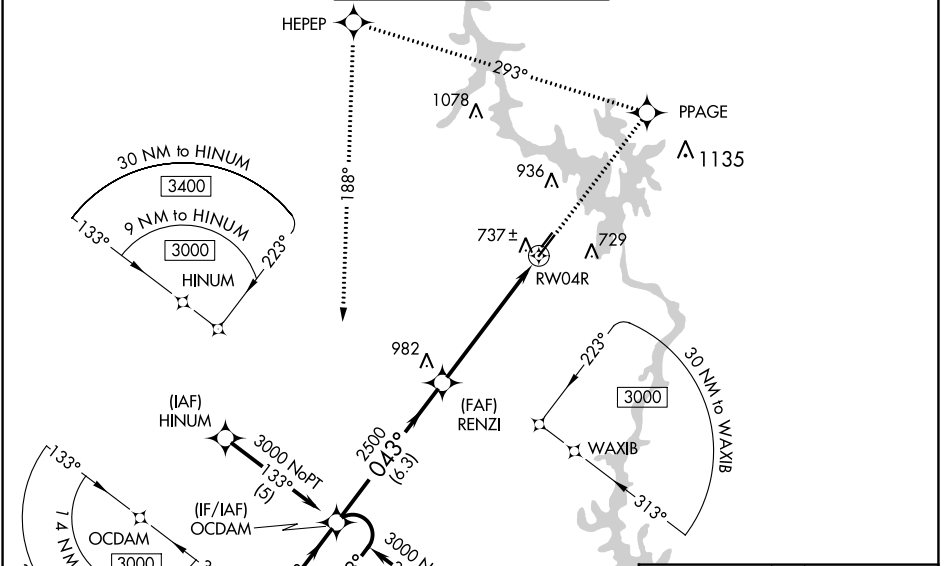
# RNAV (GPS) RWY 4R

STANLY COUNTY (VUJ)

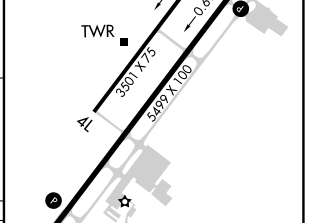
**⚠** Circling to Rwy 4L/22R NA at night. For uncompensated Baro-VNAV systems, LNAV/VNAV NA below -16°C (4°F) or above 47°C (116°F). DME/DME RNP-0.3 NA. Visibility reduction by helicopters NA. When local altimeter setting not received, use Asheboro altimeter setting and increase LPV DA to 929, LNAV/VNAV DA to 1083, and all MDA 60 feet; increase LPV all Cats, LNAV/VNAV all Cats, LNAV Cats C and D, and Circling Cats C and D visibility ¼ mile. Baro-VNAV NA when using Asheboro altimeter setting. VDP NA with Asheboro altimeter setting.

**⚠** MISSED APPROACH: Climb to 3000 direct PPAGE and left turn on track 293° to HEPEP and left turn on track 188° to OCDAM and hold.

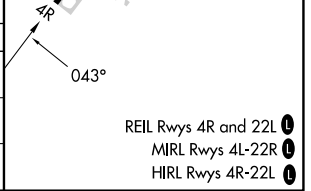
AWOS-3 <b>128.175</b>	CHARLOTTE APP CON <b>128.325 307.8</b>	STANLY COUNTY TOWER★ <b>126.275</b> (CTAF) <b>291.9</b>	GND CON <b>121.75 254.375</b>	CLNC DEL <b>121.75 254.375</b>
--------------------------	---	--	----------------------------------	-----------------------------------



ELEV 609	TDZE 609
----------	----------



CATEGORY	A	B	C	D
LPV DA	876-1 267 (300-1)			
LNAV/VNAV DA	1030-1½ 421 (500-1½)			
LNAV MDA	1160-1 551 (600-1)	1160-1½ 551 (600-1½)	1160-1¾ 551 (600-1¾)	1160-1¾ 551 (600-1¾)
CIRCLING	1260-1 651 (700-1)	1260-1¾ 651 (700-1¾)	1380-2½ 771 (800-2½)	



SE-2, 16 MAY 2024 to 13 JUN 2024

SE-2, 16 MAY 2024 to 13 JUN 2024