

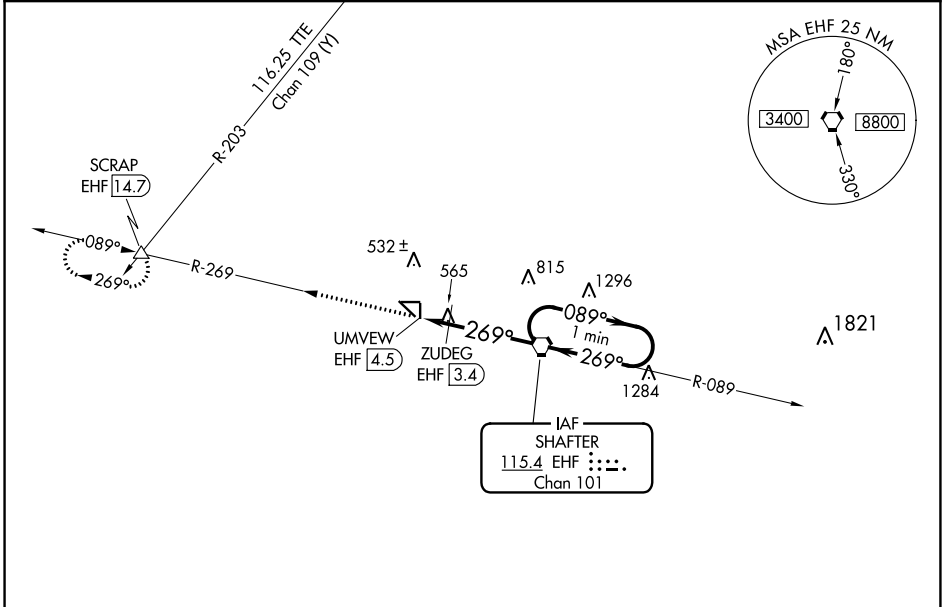
VORTAC EHF 115.4 Chan 101	APP CRS 269°	Rwy Idg TDZE Apt Elev	N/A N/A 425
---	------------------------	-----------------------------	--

VOR-A
SHAFTER-MINTER FLD (MIT)

NA Circling to Rwy 17, 35, 8 and 26 NA at night. When local altimeter setting not received, use Bakersfield altimeter setting and increase all MDAS 40 feet and increase Cat C visibility to 1 3/4.

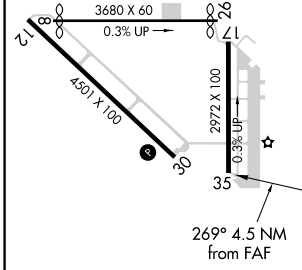
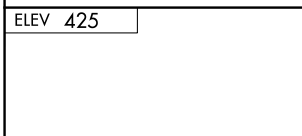
MISSED APPROACH: Climb to 4000 on EHF VORTAC R-269 to SCRAP INT/EHF 14.7 DME and hold, continue climb-in-hold to 4000.

AWOS-3 121.125	BAKERSFIELD APP CON * 126.45 270.3	CTAF 122.9
--------------------------	--	----------------------



SW-3, 16 MAY 2024 to 13 JUN 2024

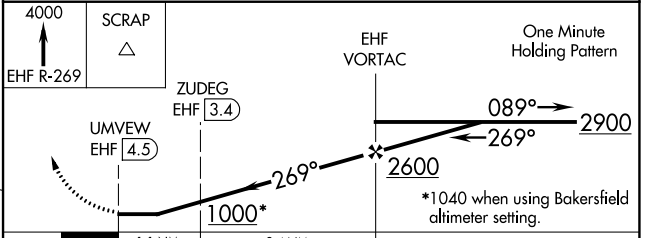
SW-3, 16 MAY 2024 to 13 JUN 2024



MIRL Rwy 12-30
REIL Rwys 12 and 30

FAF to MAP 4.5 NM

Knots	60	90	120	150	180
Min:Sec	4:30	3:00	2:15	1:48	1:30



CATEGORY	A	B	C	D
CIRCLING	1000-1	575 (600-1)	1000-1 1/2 575 (600-1 1/2)	NA
ZUDEG FIX MINIMUMS				
CIRCLING	900-1	475 (500-1)	940-1 1/2 515 (600-1 1/2)	NA