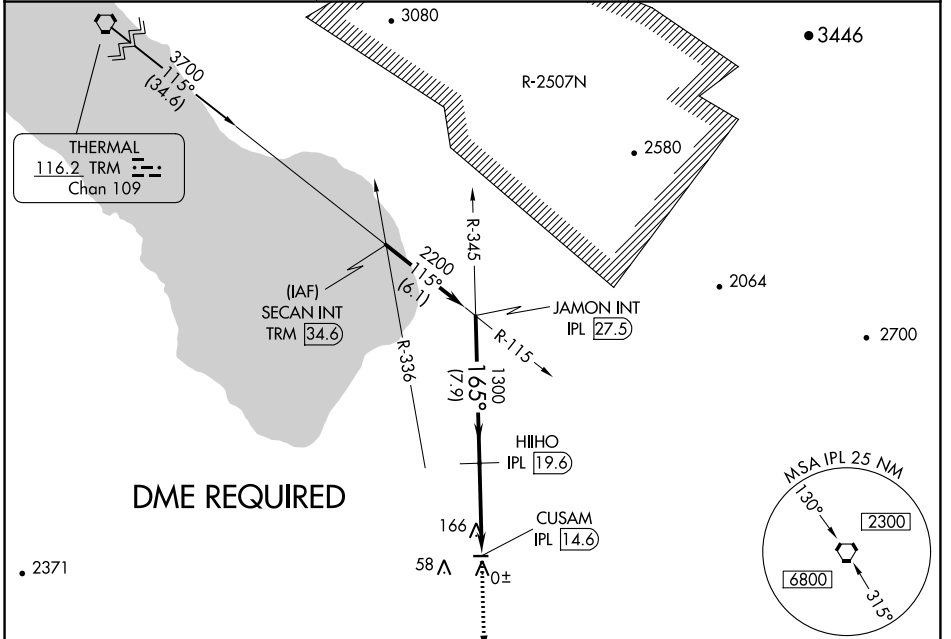


VORTAC IPL 115.9 Chan 106	APP CRS 165°	Rwy Idg TDZE Apt Elev	N/A N/A -129
---	------------------------	-----------------------------	---

VOR-B
BRAWLEY MUNI (BWC)

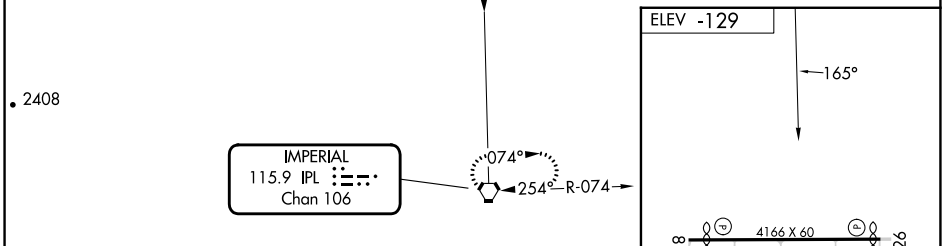
<p>▼ Use Imperial County altimeter setting. DME Required.</p> <p>▲ NA Circling Rwy 8 NA at night.</p>	MISSED APPROACH: Climb to 3000 direct IPL VORTAC and hold.
---	--

IPL ASOS 132.175	YUMA CERAP 128.55 292.2	CTAF 122.9
----------------------------	-----------------------------------	----------------------



SW-3, 16 MAY 2024 to 13 JUN 2024

SW-3, 16 MAY 2024 to 13 JUN 2024



CATEGORY	A		B		C		D
	560-1		689 (700-1)		NA		NA

