

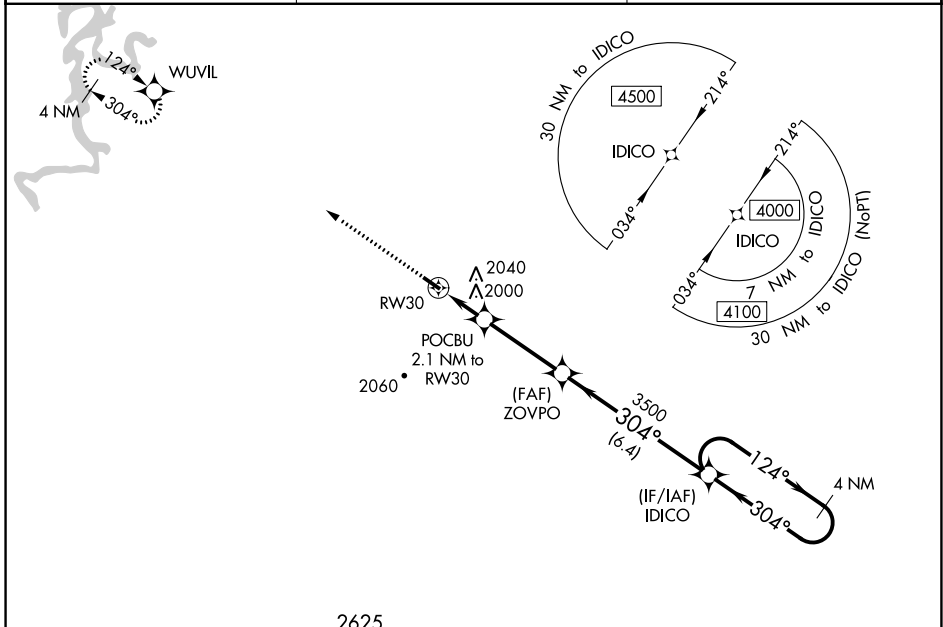
WAAS CH 40231 W30A	APP CRS 304°	Rwy Idg TDZE Apt Elev	3601 1748 1748
--	------------------------	-----------------------------	---

RNAV (GPS) RWY 30

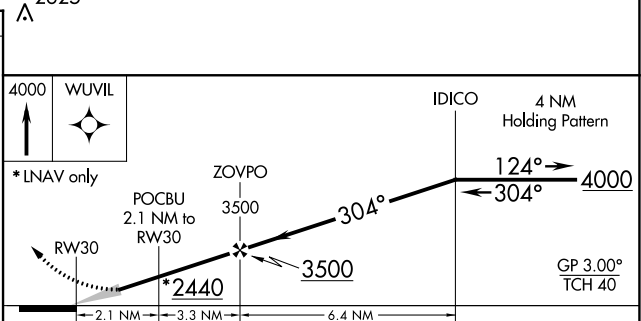
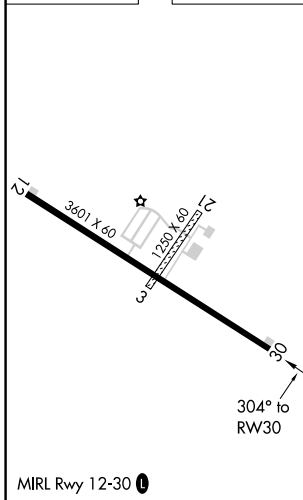
HUNTSVILLE MUNI (H34)

RNP APCH - GPS.	Baro-VNAV NA. Use Springdale altimeter setting; when not received, use Drake Fld altimeter setting and increase all DA 18 feet and all MDA 20 feet; increase LNAV/VNAV all Cats visibility ¼ mile. Circling NA to Rws 3 and 21.	MISSED APPROACH: Climb to 4000 direct WUVIL and hold.
-----------------	---	--

ASG AWOS-3 124.675	RAZORBACK APP CON * 126.6 305.2	UNICOM 122.8 (CTAF) 0
------------------------------	---	---------------------------------



ELEV 1748	TDZE 1748
-----------	-----------



CATEGORY	A	B	C	D
LPV DA	2047-1 299 (300-1)			NA
LNAV/VNAV DA	2410-2¼ 662 (700-2¼)			NA
LNAV MDA	2360-1	612 (700-1)	2360-1¾ 612 (700-1¾)	NA
<input checked="" type="checkbox"/> CIRCLING	2360-1 612 (700-1)	2520-1 772 (800-1)	2520-2¼ 772 (800-2¼)	NA

SC-1, 16 MAY 2024 to 13 JUN 2024

SC-1, 16 MAY 2024 to 13 JUN 2024