

WAAS CH 58219 W10A	APP CRS 103°	Rwy Idg TDZE Apt Elev	4000 879 881
--	------------------------	-----------------------------	---

RNAV (GPS) RWY 10

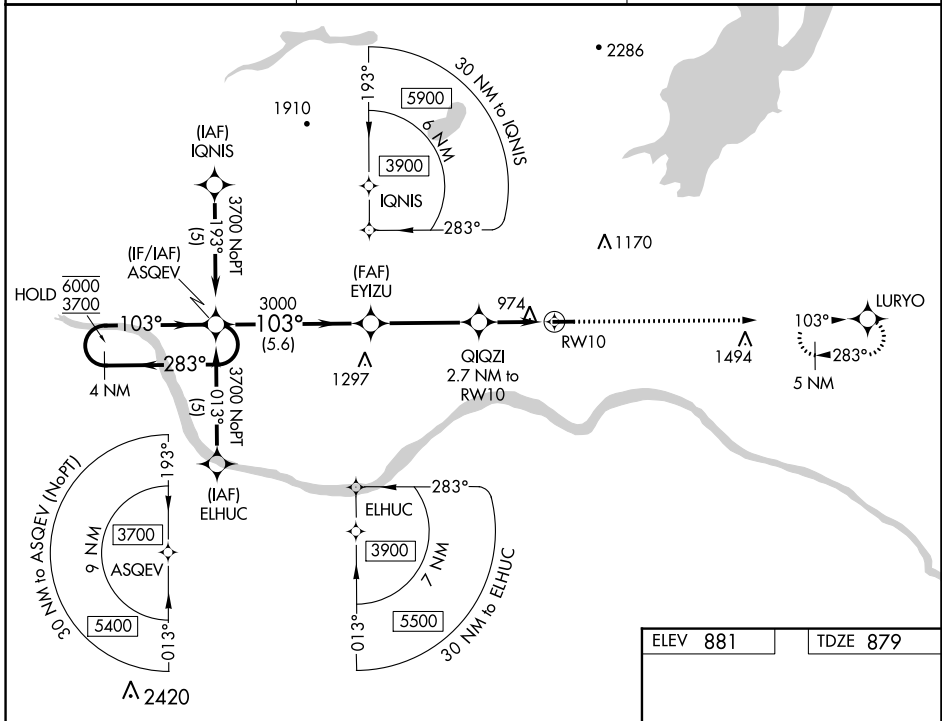
FULTON COUNTY (NY)

RNP APCH - GPS.

⚠ Rwy 10 helicopter visibility reduction below 3/4 SM NA. For uncompensated Baro-VNAV systems, LNAV/VNAV NA below -16°C or above 54°C.

MISSED APPROACH: Climb to 5000 direct LURYO and hold, continue climb-in-hold to 5000.

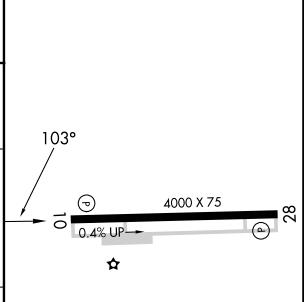
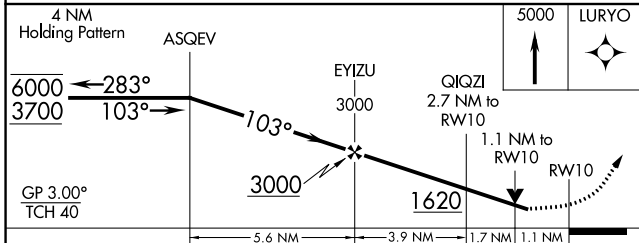
AWOS-3 119.225	ALBANY APP CON 118.05	UNICOM 122.7 (CTAF)
--------------------------	---------------------------------	-------------------------------



NE-2, 16 MAY 2024 to 13 JUN 2024

NE-2, 16 MAY 2024 to 13 JUN 2024

ELEV 881	TDZE 879
----------	----------



CATEGORY	A	B	C	D
LPV DA	1129-3/4	250 (300-3/4)		NA
LNAV/VNAV DA	1129-3/4	250 (300-3/4)		NA
LNAV MDA	1240-1	361 (400-1)		NA
C CIRCLING	1280-1 399 (400-1)	1340-1 459 (500-1)		NA

MIRL Rwy 10-28 **⓪**
REIL Rwy 10 and 28 **⓪**