

VOR/DME BJC 115.4 Chan 101	APP CRS 345°	Rwy Idg TDZE Apt Elev	N/A N/A 5055
--	------------------------	-----------------------------	---

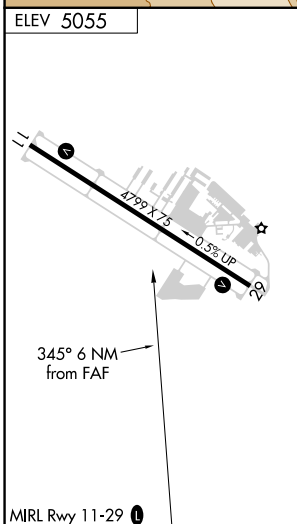
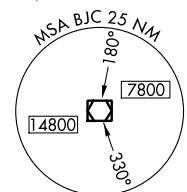
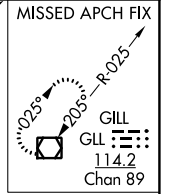
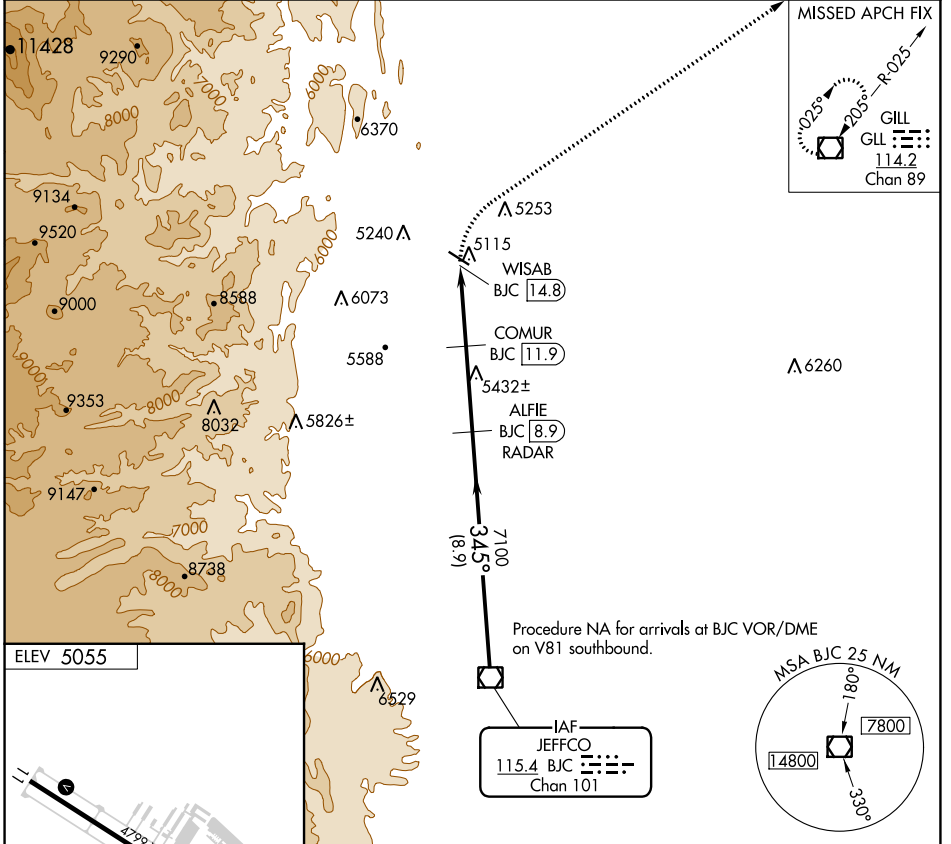
VOR/DME-A

VANCE BRAND (LMO)

⚠ When local altimeter setting not received, use Denver Intl altimeter setting and increase all MDA 120 feet; and increase Cat C visibility ½ mile and Cat D ¼ mile.

MISSED APPROACH: Climbing right turn to 7000 direct GLL VOR/DME and hold.

AWOS-3 120.0	DENVER APP CON 125.12 263.02	UNICOM 122.975 (CTAF) 0
------------------------	--	--



7000	GLL				
		WISAB BJC [14.8]	COMUR BJC [11.9]	ALFIE BJC [8.9] RADAR	BJC VOR/DME 9200
		6020	7100		
		2.9 NM	3.1 NM	8.9 NM	
CATEGORY	A	B	C	D	
CIRCLING	5640-1	585 (600-1)	5880-2½ 825 (900-2½)	6500-3 1445 (1500-3)	

SW-1, 16 MAY 2024 to 13 JUN 2024

SW-1, 16 MAY 2024 to 13 JUN 2024