

APP CRS	Rwy Idg	6101
183°	TDZE	2211
	Apt Elev	2211

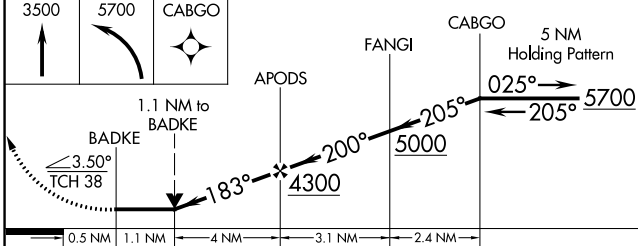
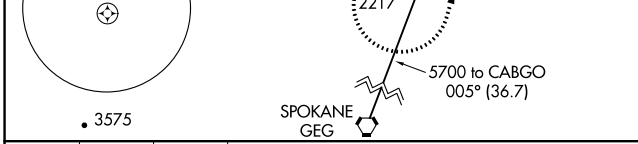
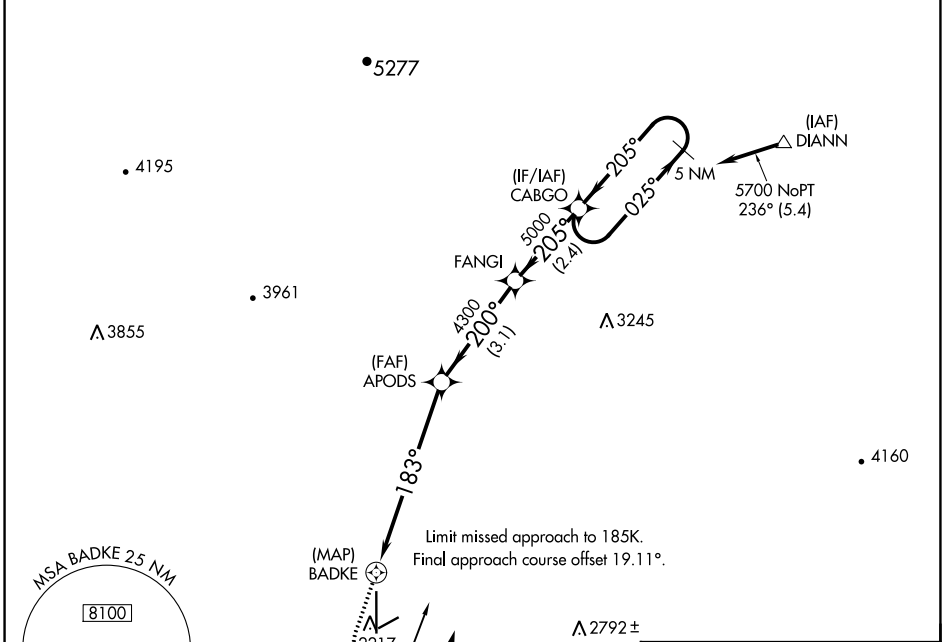
RNAV (GPS) RWY 16

DEER PARK (DEW)

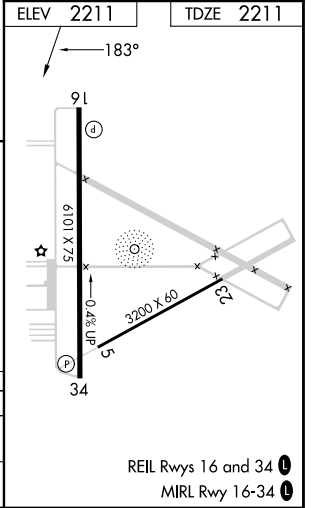
When local altimeter setting not received, procedure NA.
 DME/DME RNP-0.3 NA.
 Helicopter visibility reduction below 3/4 SM NA.
 Circling NA west of Rwy 16-34.

MISSED APPROACH: Climb to 3500 then climbing left turn to 5700 direct CABGO and hold.

ASOS 135.175	SPOKANE APP CON 123.75 282.25	UNICOM 123.0 (CTAF) 0
------------------------	---	---------------------------------



CATEGORY	A	B	C	D
LNVA MDA	2640-1 429 (500-1)		2640-1 1/4 429 (500-1 1/4)	
CIRCLING	2700-1 489 (500-1)		2700-1 1/2 489 (500-1 1/2)	2860-2 649 (700-2)



NW-1, 16 MAY 2024 to 13 JUN 2024

NW-1, 16 MAY 2024 to 13 JUN 2024