

| | | | |
|--|------------------------|-----------------------------|---|
| WAAS CH 61306 W34A | APP CRS 344° | Rwy Idg TDZE Apt Elev | 6101 2201 2211 |
|--|------------------------|-----------------------------|---|

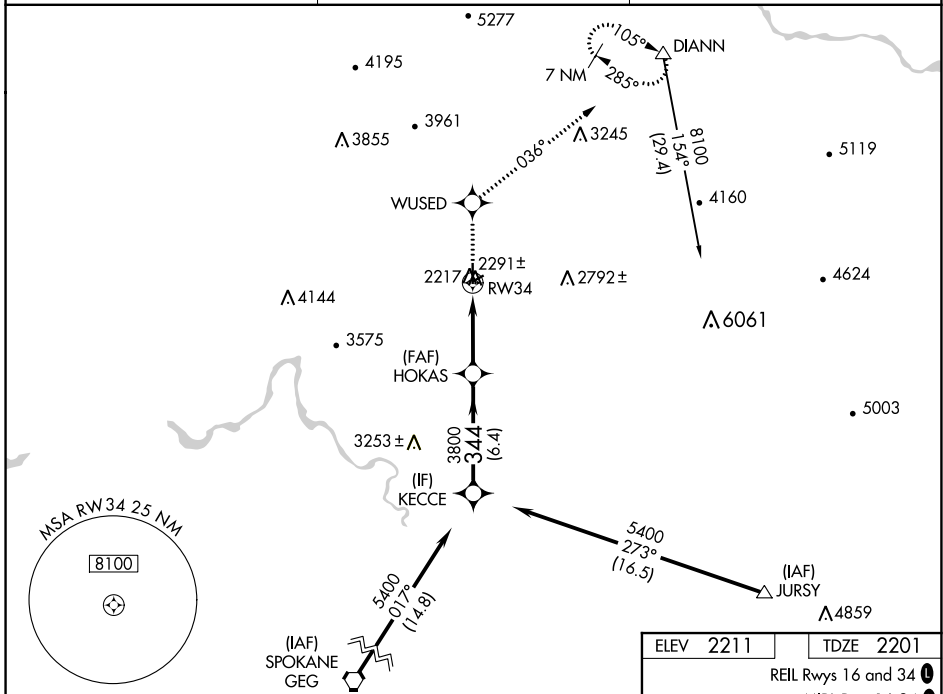
RNAV (GPS) RWY 34

DEER PARK (DEW)

⚠ For uncompensated Baro-VNAV systems, LNAV/VNAV NA below -19°C (-2°F) or above 44°C (111°F). When local altimeter setting not received, use Spokane Intl altimeter setting and increase all DA/MDA 80 feet and all visibilities ¼ SM. Circling NA west of Rwy 16-34. DME/DME RNP-0.3 NA. VDP and Baro-VNAV NA when using Spokane Intl altimeter setting.

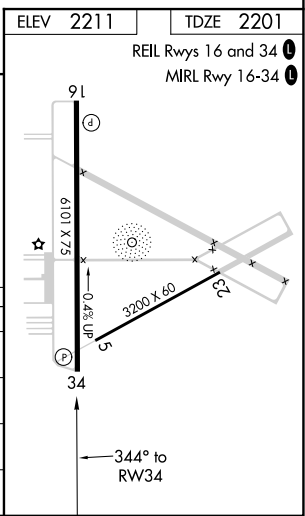
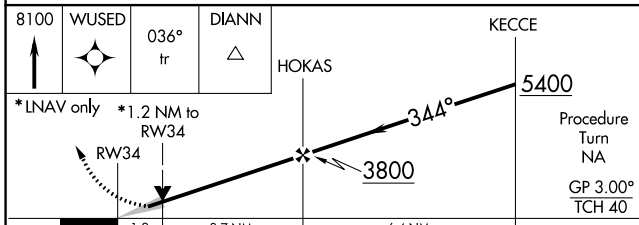
MISSED APPROACH: Climb to 8100 direct WUSED and via 036° track to DIANN and hold, continue climb-in-hold to 8100.

| | | |
|------------------------|---|--|
| ASOS 135.175 | SPOKANE APP CON 123.75 282.25 | UNICOM 123.0 (CTAF) 0 |
|------------------------|---|--|



NW-1, 16 MAY 2024 to 13 JUN 2024

NW-1, 16 MAY 2024 to 13 JUN 2024



| CATEGORY | A | B | C | D |
|-------------------|--------------------|----------------------|----------------------|--------------------|
| LPV DA | 2466-1 | | 265 (300-1) | |
| LNAV/VNAV DA | 2551-1¼ | | 350 (400-1¼) | |
| LNAV MDA | 2600-1 399 (400-1) | | 2600-1¼ 399 (400-1¼) | |
| C CIRCLING | 2700-1 489 (500-1) | 2700-1½ 489 (500-1½) | | 2860-2 649 (700-2) |