

(STIGR2.STIGR) 23334

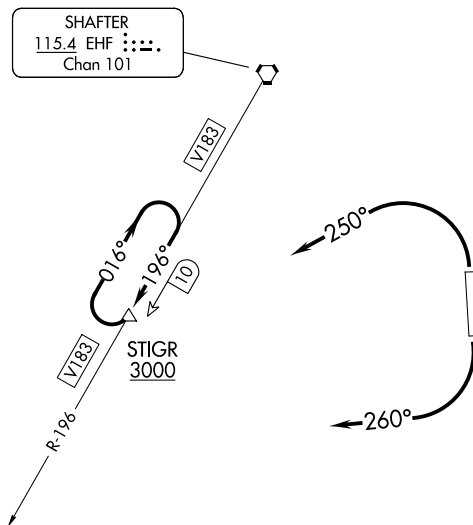
# STIGR TWO DEPARTURE

AL-9118 (FAA)

BAKERSFIELD MUNI (L45)  
BAKERSFIELD, CALIFORNIA

LOS ANGELES CENTER  
127.1 317.7  
BAKERSFIELD DEP CON ★  
126.45 270.3

**TOP ALTITUDE:  
ASSIGNED BY ATC**



**TAKEOFF MINIMUMS:**

Rwy 16: Standard.

Rwy 34: 400-1¼ or standard with minimum climb of 555' per NM to 900.

NOTE: DME required.

NOTE: Chart not to scale.

## DEPARTURE ROUTE DESCRIPTION

TAKEOFF RWY 16: Climbing right turn heading 260° to intercept V183, to STIGR/EHF 10 DME, thence . . .

TAKEOFF RWY 34: Climbing left turn heading 250° to intercept V183, to STIGR/EHF 10 DME, thence . . .

. . . climb in STIGR holding pattern to cross STIGR/EHF 10 DME at or above 3000 or MEA for route of flight then proceed on course.

**STIGR TWO DEPARTURE**  
(STIGR2.STIGR) 15SEP16

BAKERSFIELD, CALIFORNIA  
BAKERSFIELD MUNI (L45)

SW-3, 16 MAY 2024 to 13 JUN 2024

SW-3, 16 MAY 2024 to 13 JUN 2024