

WAAS CH 48909 W21A	APP CRS 209°	Rwy Idg TDZE 948 Apt Elev 948	5498 948 948
--	------------------------	---	---

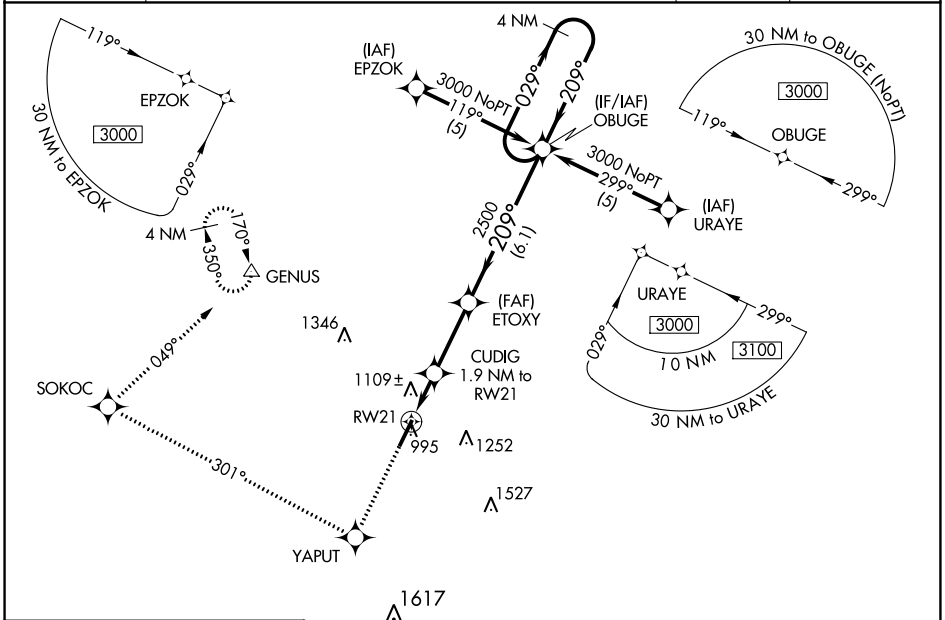
RNAV (GPS) Z RWY 21

GEORGETOWN-SCOTT COUNTY RGNL (27K)

NA For uncompensated Baro-VNAV systems, LNAV/VNAV NA below -16° C (4° F) or above 46° C (114° F). DME/DME RNP-0.3 NA. When local altimeter setting not received, use Lexington altimeter setting and increase LPV DA to 1186, LNAV/VNAV DA to 1460, and all MDA 40 feet; increase LPV all Cats and LNAV Cats C/D and Circling Cat D visibility ¼ SM. Baro-VNAV and VDP NA with Lexington altimeter setting.

MISSED APPROACH: Climb to 3000 direct YAPUT and right turn on track 301° to SOKOC and right turn on track 049° to GENUS and hold.

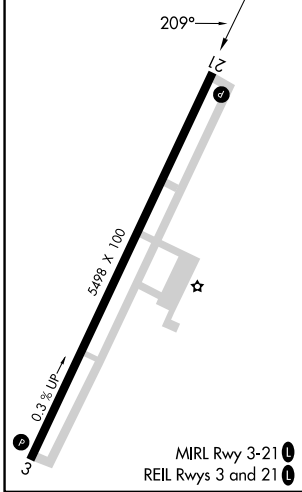
AWOS-3 119,975	LEXINGTON APP CON 120.15 259.3 (040° - 220°) 120.75 298.9 (221° - 039°)	CLNC DEL 127,425	UNICOM 123.0 (CTAF) 0
--------------------------	---	----------------------------	---------------------------------



SE-1, 16 MAY 2024 to 13 JUN 2024

SE-1, 16 MAY 2024 to 13 JUN 2024

ELEV 948	TDZE 948
-----------------	-----------------



3000	↑	YAPUT	↻	SOKOC	↻	GENUS	△	4 NM Holding Pattern
			tr 301°		tr 049°			
*LNAV only.		CUDIG	ETOXY	OBUGE	3000			
		1.9 NM to RW21	2500		029° →	← 209°		
		*1.2 NM to RW21	*1580	2500	GP 3.00° TCH 30			
		1.2 NM	0.7 NM	2.8 NM	6.1 NM			
CATEGORY	A	B	C	D				
LPV DA	1148-¾		200 (200-¾)					
LNAV/VNAV DA	1422-1¾		474 (500-1¾)					
LNAV MDA	1360-1	412 (500-1)	1360-1¼	412 (500-1¼)				
CIRCLING	1420-1	472 (500-1)	1560-1¾	1660-2¼	612 (700-1¾)	712 (800-2¼)		