

WAAS CH 87114 W28A	APP CRS 276°	Rwy Idg TDZE Apt Elev	5151 110 112
--	------------------------	-----------------------------	---

RNAV (GPS) RWY 28

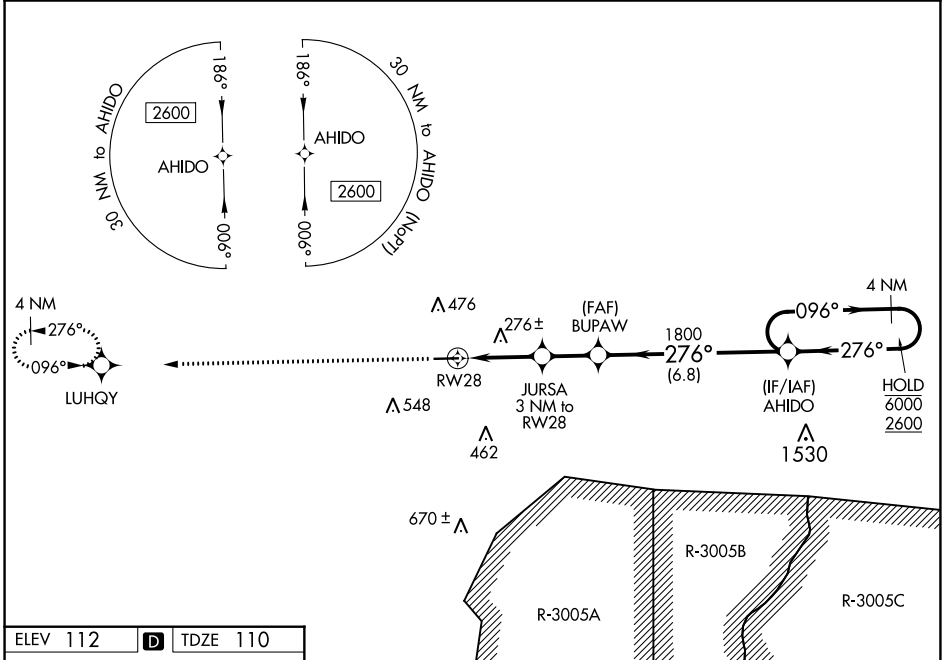
CLAXTON-EVANS COUNTY (C'WV)

RNP APCH GPS.

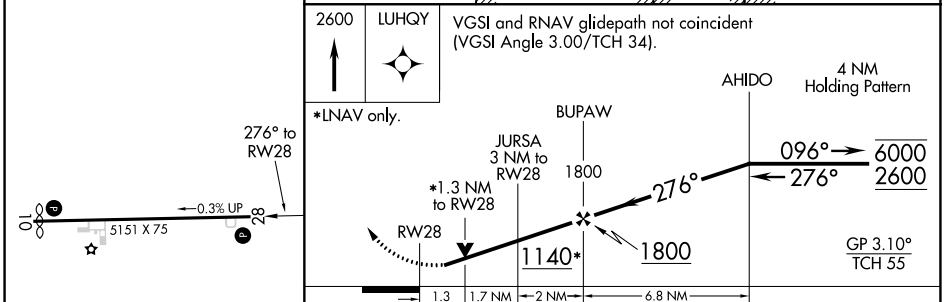
▼ Rwy 28 helicopter visibility reduction below 3/4 SM NA. For uncompensated Baro-VNAV systems, LNAV/VNAV NA below -15°C or above 54°C. Circling Rwy 10 NA at night.

▲ MISSED APPROACH: Climb to 2600 direct LUHQY and hold.

AWOS-3 120.075	JACKSONVILLE CENTER 132.925 363.2	UNICOM 122.8 (CTAF) 0
--------------------------	---	---------------------------------



ELEV 112	D	TDZE 110
----------	----------	----------



2600 LUHQY	VGSi and RNAV glidepath not coincident (VGSi Angle 3.00/TCH 34).			
↑	*LNAV only.			
	A	B	C	D
	1.3	1.7 NM	2 NM	6.8 NM

LPV DA	386-1		276 (300-1)	
LNAV/VNAV DA	403-1		293 (300-1)	
LNAV MDA	540-1	430 (500-1)	540-1 1/4	430 (500-1 1/4)
C CIRCLING	580-1 468 (500-1)	780-1 668 (700-1)	860-2 1/4 748 (800-1 1/4)	860-2 1/2 748 (800-2 1/2)

MIRL Rwy 10-28 **0**
REIL Rwys 10 and 28 **0**

SE-4, 16 MAY 2024 to 13 JUN 2024

SE-4, 16 MAY 2024 to 13 JUN 2024