

APP CRS <b>327°</b>	Rwy Idg TDZE Apt Elev	<b>N/A</b> <b>N/A</b> <b>44</b>
------------------------	-----------------------------	---------------------------------------

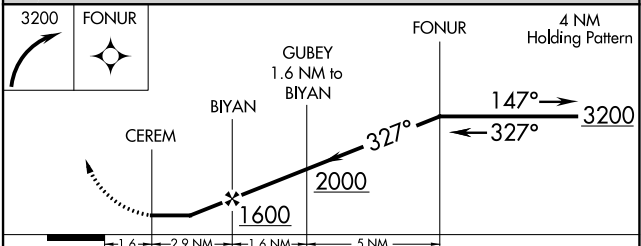
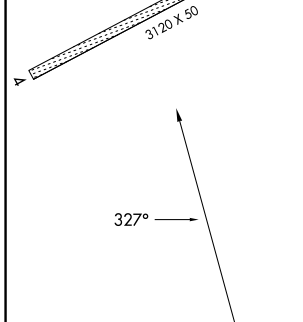
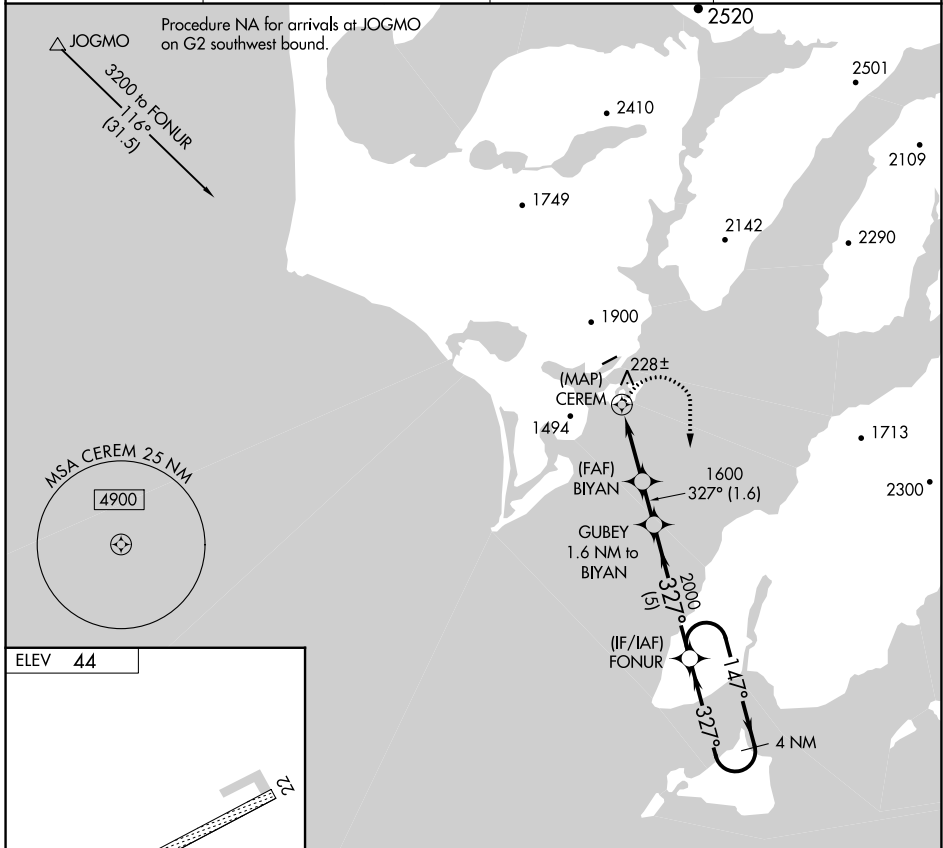
# RNAV (GPS)-A

AKHIOK (AKK) (PAKH)

**⚠** DME/DME RNP-0.3 NA. Procedure NA at night.  
**⚠** Circling NA northwest of Rwy 4/22.

MISSED APPROACH: Climbing right turn to 3200 direct FONUR WP and hold.

AWOS-3P <b>118.325</b>	ANCHORAGE CENTER <b>125.1 281.4</b>	KENAI RADIO <b>122.6</b>	UNICOM <b>122.8</b> (CTAF)
---------------------------	--	-----------------------------	-------------------------------



CATEGORY	A	B	C	D
CIRCLING	620-2 576 (600-2)	1360-2 1316 (1400-2)	NA	

AK, 16 MAY 2024 to 11 JUL 2024

AK, 16 MAY 2024 to 11 JUL 2024