

WAAS CH <b>45635</b> <b>W33A</b>	APP CRS <b>330°</b>	Rwy Idg TDZE <b>8303</b> <b>7926</b> Apt Elev <b>7950</b>
--	------------------------	--

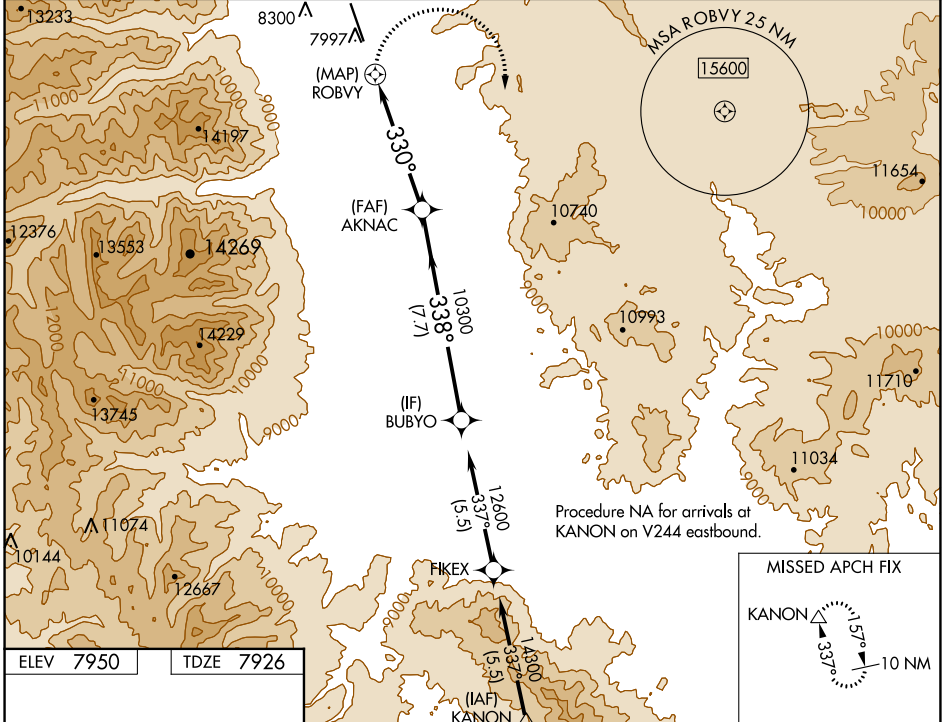
# RNAV (GPS) RWY 33

CENTRAL COLORADO RGNL (A.E.J)

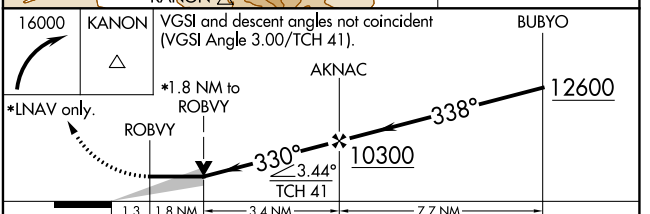
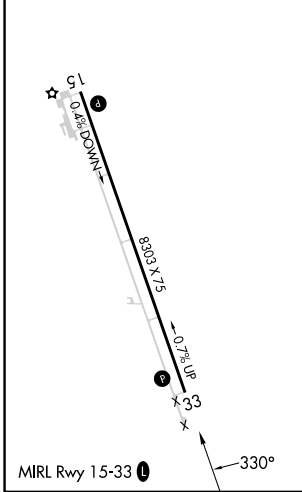
**⚠** Circling NA northeast of Rwy 15-33. DME/DME RNP-0.3 NA.  
**⚠** NA When local altimeter setting not received, use Solida altimeter setting and increase all MDA 100 feet. VDP NA with Solida altimeter setting.  
**⚠** -22°C #Missed approach requires minimum climb of 425 feet per NM to 14100.

MISSED APPROACH: Climbing right turn to 16000 direct KANON and hold, continue climb-in-hold to 16000.

AWOS-3 <b>132.925</b>	DENVER CENTER <b>119.85 363.15</b>	UNICOM <b>122.8 (CTAF) 0</b>
--------------------------	---------------------------------------	---------------------------------



ELEV 7950	TDZE 7926
-----------	-----------



CATEGORY	A	B	C	D
#LP MDA	8960-1½	1034 (1100-1½)	8960-3 1034 (1100-3)	NA
LP MDA	9840-1½	1914 (1900-1½)	9840-3 1914 (1900-3)	NA
#LNAV MDA	9300-1½	1374 (1400-1½)	9300-3 1374 (1400-3)	NA
LNAV MDA	9980-1½	2054 (2100-1½)	9980-3 2054 (2100-3)	NA
<b>☑</b> CIRCLING	9980-1½	2030 (2100-1½)	9980-3 2030 (2100-3)	NA

SW-1, 16 MAY 2024 to 13 JUN 2024

SW-1, 16 MAY 2024 to 13 JUN 2024