

ATMORE, ALABAMA

AL-9420 (FAA)

19283

WAAS CH <b>40031</b> <b>W18A</b>	APP CRS <b>183°</b>	Rwy Idg TDZE Apt Elev	<b>5001</b> <b>286</b> <b>286</b>
--	------------------------	-----------------------------	---

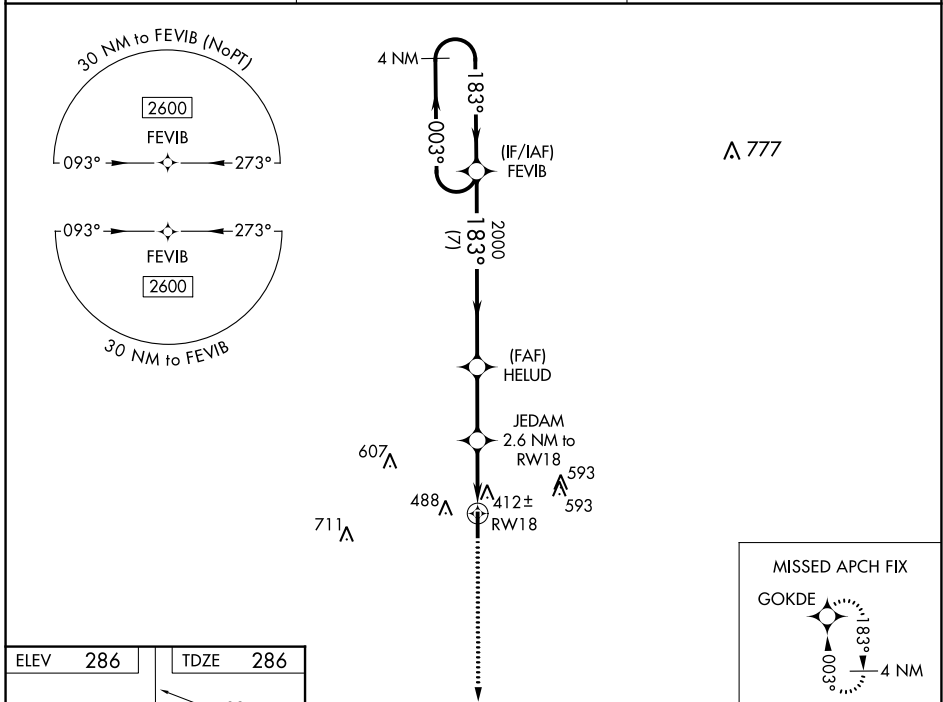
# RNAV (GPS) RWY 18

ATMORE MUNI (ØR1)

**▽** Baro-VNAV NA. Helicopter visibility reduction below 1 SM NA. DME/DME RNP-0.3 NA.  
**△ NA** Use Brewton altimeter setting.

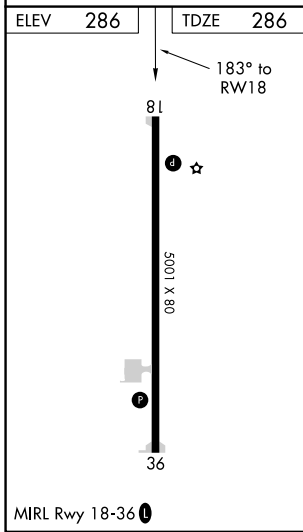
MISSED APPROACH: Climb to 2600 direct GOKDE and hold.

12J AWOS-3PT <b>119.325</b>	PENSACOLA APP CON <b>127.35 291.625</b>	UNICOM <b>122.8 (CTAF) 0</b>
--------------------------------	--	---------------------------------



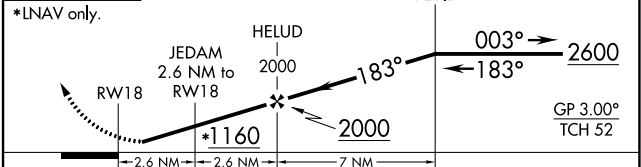
SE-4, 16 MAY 2024 to 13 JUN 2024

SE-4, 16 MAY 2024 to 13 JUN 2024



**2600** **GOKDE** VGS1 and RNAV glidepath not coincident (VGS1 Angle 3.00/TCH 40). **4 NM Holding Pattern**

\*LNAV only.



CATEGORY	A	B	C	D
LPV DA		613-1	327 (400-1)	
LNAV/VNAV DA		653-1	367 (400-1)	
LNAV MDA	740-1	454 (500-1)	740-1 <sup>3</sup> / <sub>8</sub>	454 (500-1 <sup>3</sup> / <sub>8</sub> )
<b>CIRCLING</b>	880-1	594 (600-1)	980-2 694 (700-2)	1000-2 <sup>1</sup> / <sub>4</sub> 714 (800-2 <sup>1</sup> / <sub>4</sub> )

ATMORE, ALABAMA  
Amdt 2 01FEB18

31°01'N-87°27'W

# RNAV (GPS) RWY 18

ATMORE MUNI (ØR1)