

APP CRS	Rwy ldg	<b>5005</b>
<b>168°</b>	TDZE	<b>389</b>
	Apt Elev	<b>389</b>

# RNAV (GPS) RWY 17

TURNER COUNTY (75J)

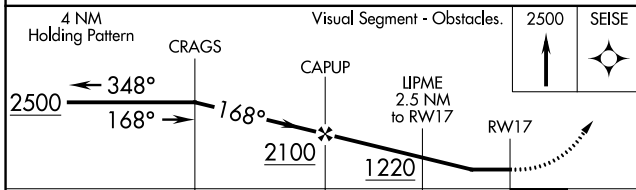
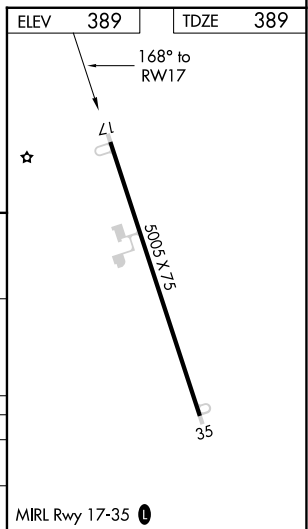
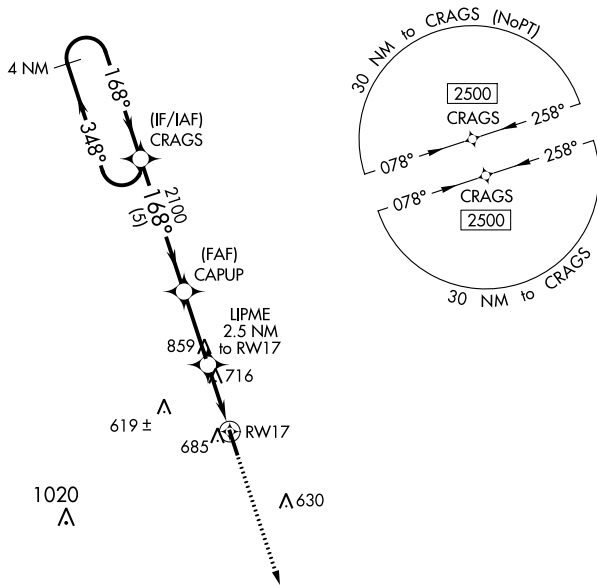
**▽** Rwy 17 helicopter visibility reduction below 1 SM NA.  
**▲ NA** DME/DME RNP-0.3 NA.  
 When Fitzgerald altimeter setting not received, procedure NA.  
 Procedure NA at night.

MISSED APPROACH: Climb to 2500  
 direct SEISE and hold.

FZW AWOS-3  
**118.625**

JACKSONVILLE CENTER  
**125.75 363.075**

UNICOM  
**122.7 (CTAF)**



CATEGORY	A	B	C	D
LNVA MDA	1080-1	691 (700-1)	1080-2	691 (700-2)
<b>C</b> CIRCLING	1100-1	711 (800-1)	1140-2 <sup>1</sup> / <sub>4</sub> 751 (800-2 <sup>1</sup> / <sub>4</sub> )	1260-2 <sup>3</sup> / <sub>4</sub> 871 (900-2 <sup>3</sup> / <sub>4</sub> )

MIRL Rwy 17-35 **①**

SE-4, 16 MAY 2024 to 13 JUN 2024

SE-4, 16 MAY 2024 to 13 JUN 2024