

APP CRS	Rwy Idg	N/A
092°	TDZE	N/A
	Apt Elev	200

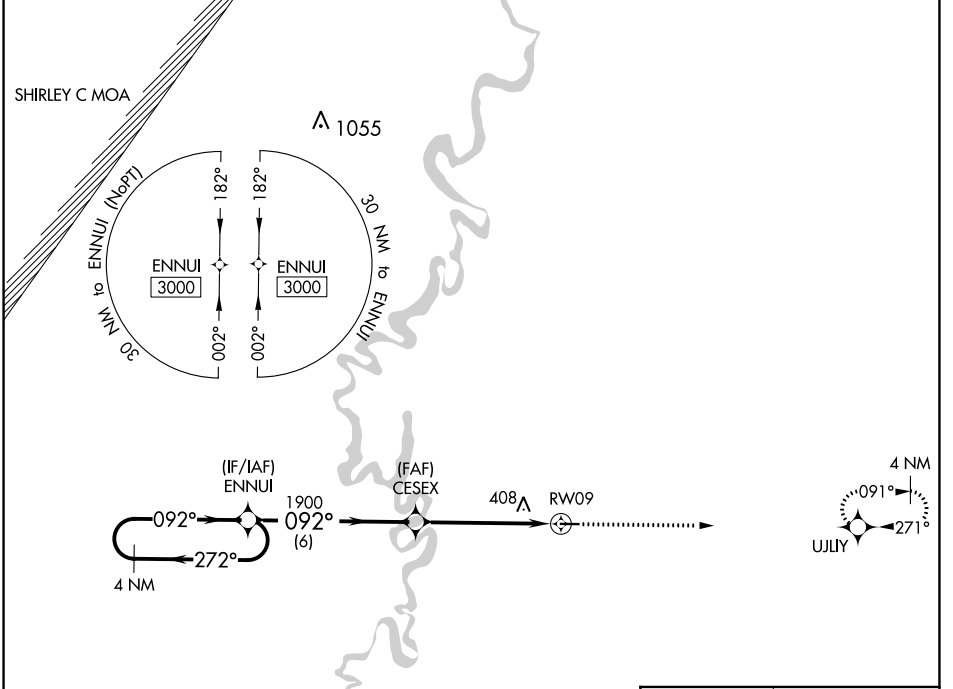
RNAV (GPS)-A

WOODRUFF COUNTY (M64)

NA Rwy 9, 27 helicopter visibility reduction below 1 SM NA. DME/DME RNP-0.3 NA. Procedure NA at night. Use Newport altimeter setting.

MISSED APPROACH: Climb to 3000 direct UJLY and hold.

M19 AWOS-3PT 118.15	MEMPHIS CENTER 135.3 335.8	CTAF 122.9 0
-------------------------------	--------------------------------------	------------------------



ELEV	200
------	-----



4 NM Holding Pattern	ENNUJ	Visual Segment - Obstacles.	3000	UJLY
3000	← 272°	092° →	092°	CESEX
			1900	RW09
		6 NM	5.2 NM	

CATEGORY	A	B	C	D
CIRCLING	740-1 540 (600-1)	820-1 620 (700-1)	NA	

MIRL Rwy 9-27 0