

KIANA, ALASKA

AL-10234 (FAA)

22195

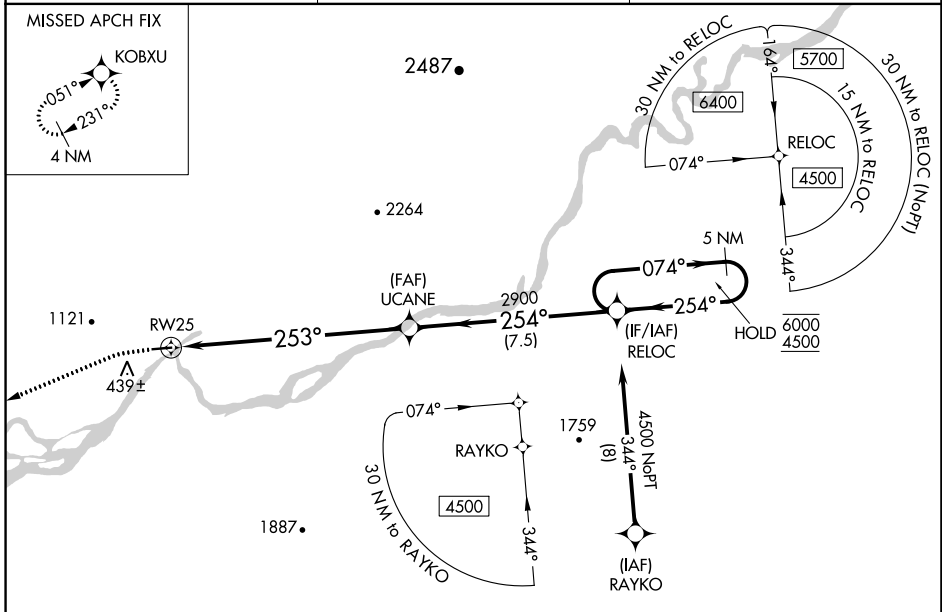
WAAS CH 63143 W25A	APP CRS 253°	Rwy Idg 4000 TDZE 175 Apt Elev 179
--	------------------------	---

RNAV (GPS) RWY 25

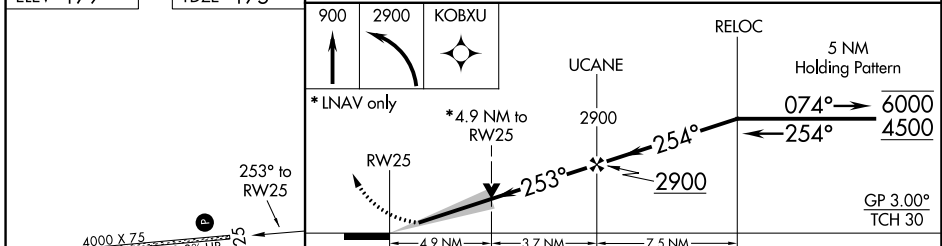
BOB BAKER MEML (IAN) (PAIK)

RNP APCH-GPS.	MISSED APPROACH: Climb to 900 then climbing left turn to 2900 direct KOBXU and hold. #Missed approach requires minimum climb of 335 feet per NM to 1440.
NA -29°C Circling NA north of Rwy 7-25. Circling Rwy 7 NA at night. Baro-VNAV NA.	

AWOS-3P 119.025	ANCHORAGE CENTER 119.2 263.0	CTAF 122.7
---------------------------	--	----------------------



ELEV 179	TDZE 175	1333
----------	----------	------



CATEGORY	A	B	C	D
LPV DA#		450-1	275 (300-1)	
LPV DA		639-1 $\frac{3}{8}$	464 (500-1 $\frac{3}{8}$)	
LNAV/VNAV DA		807-1 $\frac{3}{4}$	632 (700-1 $\frac{3}{4}$)	
LNAV MDA	1740-1 $\frac{1}{4}$ 1565 (1600-1 $\frac{1}{4}$)	1740-1 $\frac{1}{2}$ 1565 (1600-1 $\frac{1}{2}$)	1740-3	1565 (1600-3)
CIRCLING	1740-1 $\frac{1}{4}$ 1561 (1600-1 $\frac{1}{4}$)	1740-1 $\frac{1}{2}$ 1561 (1600-1 $\frac{1}{2}$)	1740-3	1561 (1600-3)

MIRL Rwy 7-25
REL Rwy 25

KIANA, ALASKA
Amdt 1A 14JUL22

66°59'N-160°26'W

BOB BAKER MEML (IAN) (PAIK)

RNAV (GPS) RWY 25

AK, 16 MAY 2024 to 11 JUL 2024