

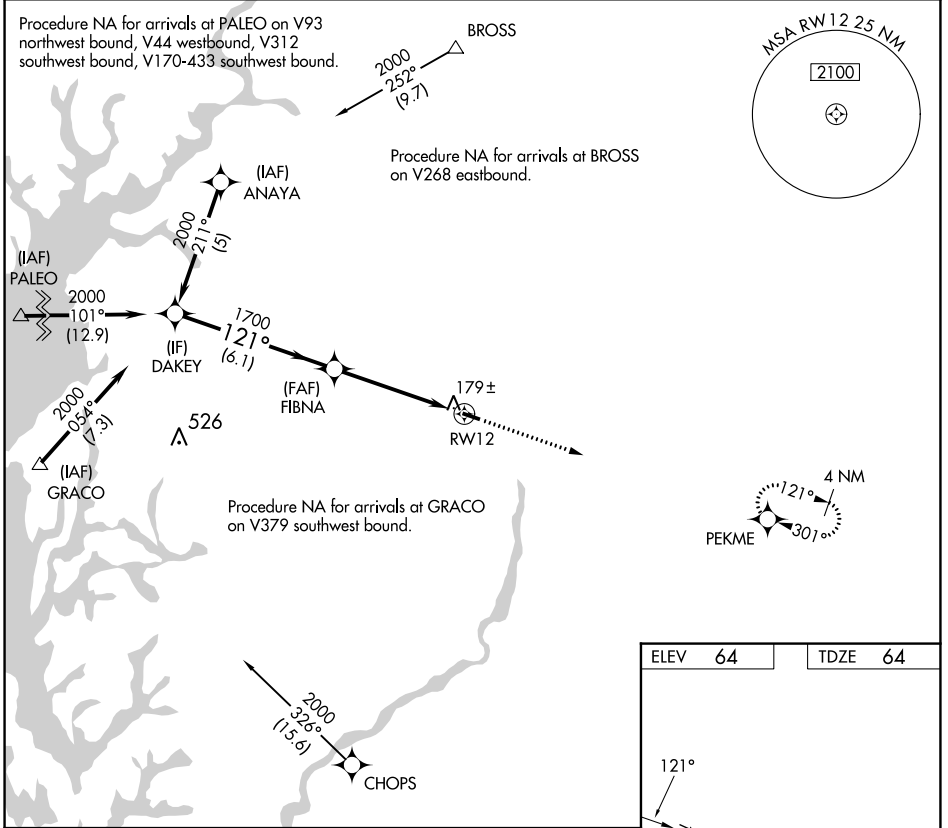
APP CRS	Rwy Idg	3214
121°	TDZE	64
	Apt Elev	64

RNAV (GPS) RWY 12

GOODEN AIRPARK (RJD)

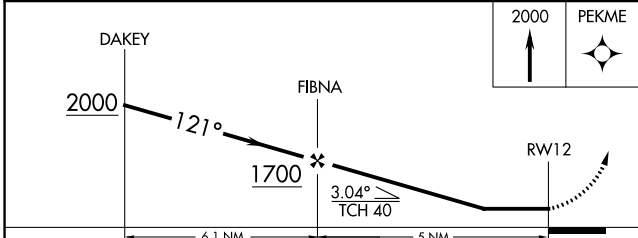
RNP APCH - GPS.	Procedure NA at night. Use Easton altimeter setting: when not received, procedure NA. Rwy 12 helicopter visibility reduction below 1 SM NA.	MISSED APPROACH: Climb to 2000 direct PEKME and hold.
-----------------	---	---

ESN AWOS-3PT 124.475	POTOMAC APP CON 124.55 317.425	UNICOM 122.8 (CTAF) 0
--------------------------------	--	---------------------------------



NE-3, 16 MAY 2024 to 13 JUN 2024

NE-3, 16 MAY 2024 to 13 JUN 2024



ELEV 64	TDZE 64
---------	---------

121°

3214 X 50

30

LIRL Rwy 12-30 0

REIL Rws 12 and 30 0

CATEGORY	A	B	C	D
LNAV MDA	480-1	416 (500-1)		NA
CIRCLING	520-1	456 (500-1)		NA