

APP CRS <b>312°</b>	Rwy Idg <b>4007</b>
	TDZE <b>510</b>
	Apt Elev <b>514</b>

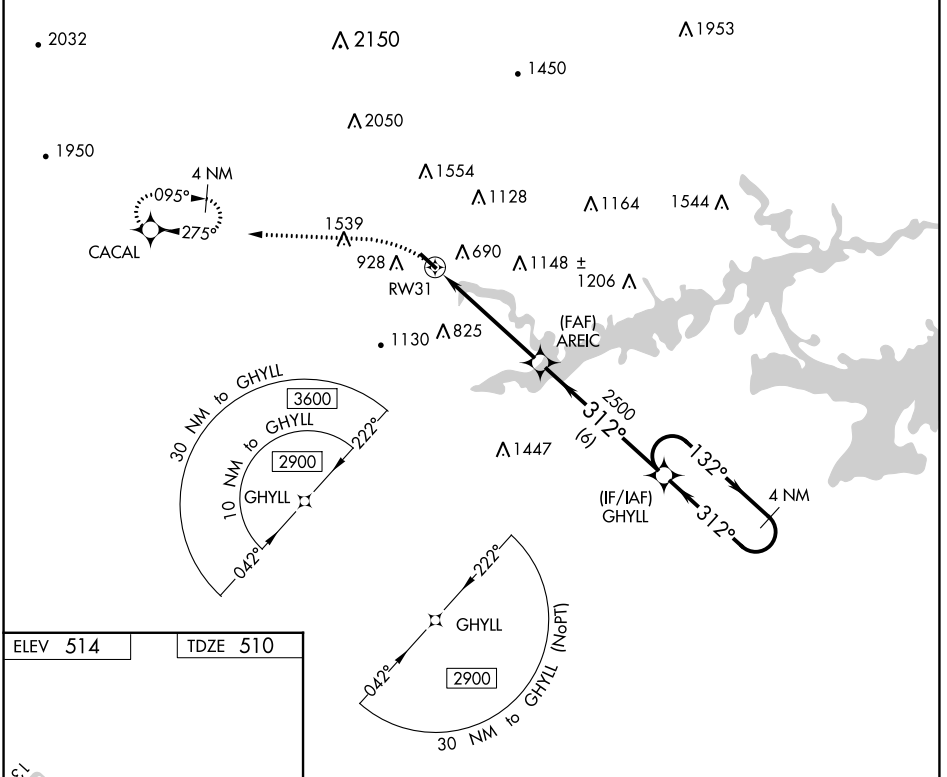
# RNAV (GPS) RWY 31

CLINTON MUNI (CCA)

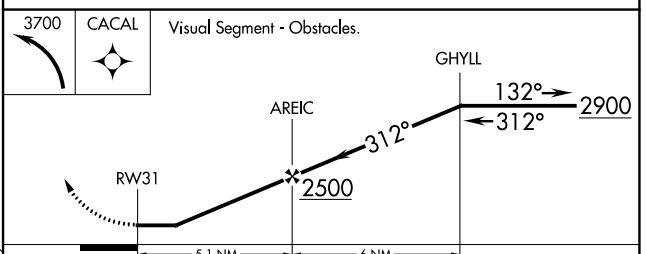
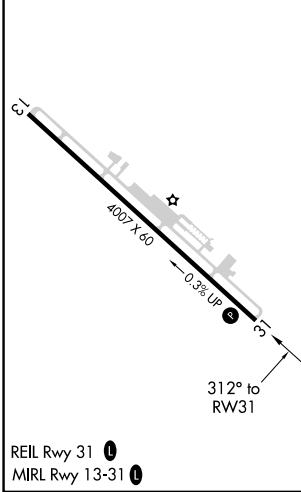
**▽** When local altimeter setting not received, procedure NA.  
**△** NA DME/DME RNP-0.3 NA. Helicopter visibility reduction below 1 SM NA. Procedure NA at night.

MISSED APPROACH: Climbing left turn to 3700 direct CACAL and hold.

AWOS-3 <b>118.725</b>	MEMPHIS CENTER <b>126.85 281.55</b>	UNICOM <b>122.7 (CTAF) ①</b>
--------------------------	--	---------------------------------



ELEV 514	TDZE 510
----------	----------



CATEGORY	A	B	C	D
LNAV MDA	1460-1¼	950 (1000-1¼)	1460-2½ 950 (1000-2½)	NA
<b>C</b> CIRCLING	1460-1¼ 946 (1000-1¼)	1620-1½ 1106 (1200-1½)	1880-3 1366 (1400-3)	NA

SC-1, 16 MAY 2024 to 13 JUN 2024

SC-1, 16 MAY 2024 to 13 JUN 2024