

APP CRS	Rwy Idg	<b>3600</b>
<b>150°</b>	TDZE	<b>1417</b>
	Apt Elev	<b>1418</b>

# RNAV (GPS) RWY 15

PARKSTON MUNI (8V3)

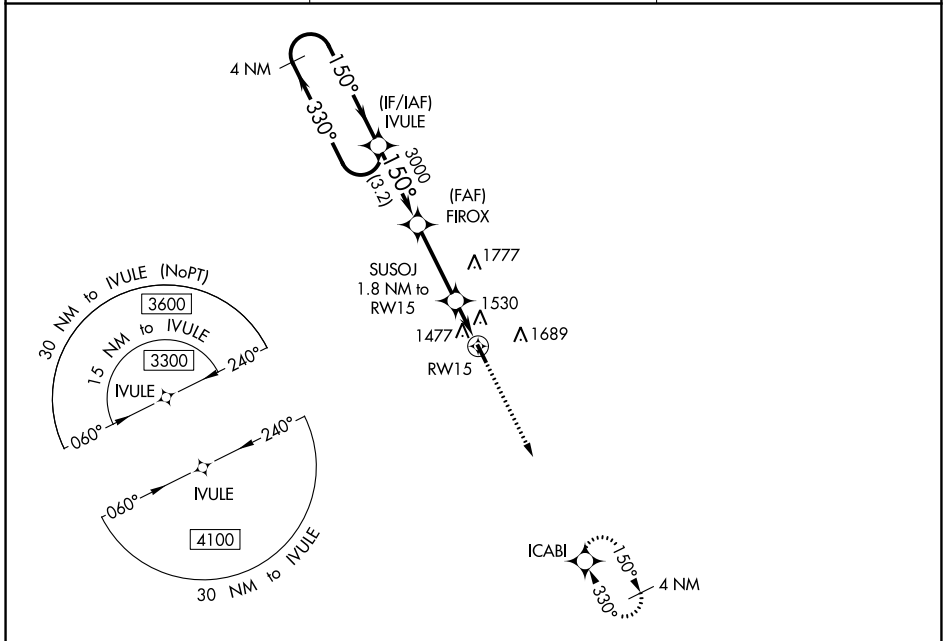
**NA** DME/DME RNP-0.3 NA. Use Mitchell altimeter setting; when not received, use Yankton altimeter setting and increase all MDA 40 feet. Helicopter visibility reduction below 3/4 SM not authorized.

MISSED APPROACH: Climb to 3300 direct ICABI and hold.

MHE ASOS  
**124.175**

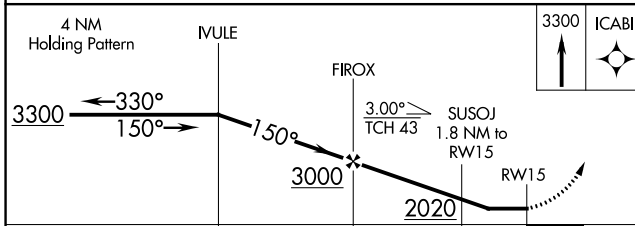
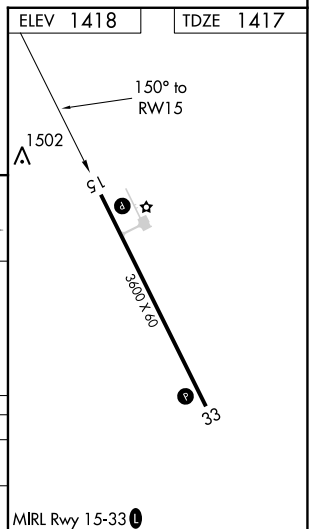
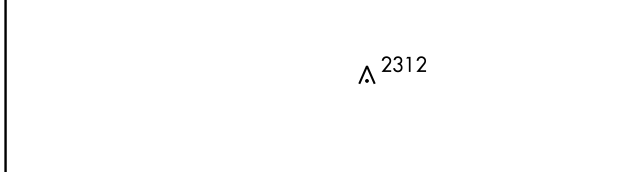
MINNEAPOLIS CENTER  
**128.0 385.5**

AUNICOM  
**122.9 (CTAF)**



NC-1, 16 MAY 2024 to 13 JUN 2024

NC-1, 16 MAY 2024 to 13 JUN 2024



CATEGORY	A	B	C	D
LNVA MDA	1860-1	443 (500-1)		NA
CIRCLING	1980-1 562 (600-1)	2060-1 642 (700-1)		NA