

WAAS CH 62833 W33A	APP CRS 330°	Rwy Idg 3600 TDZE 1418 Apt Elev 1418
--	------------------------	---

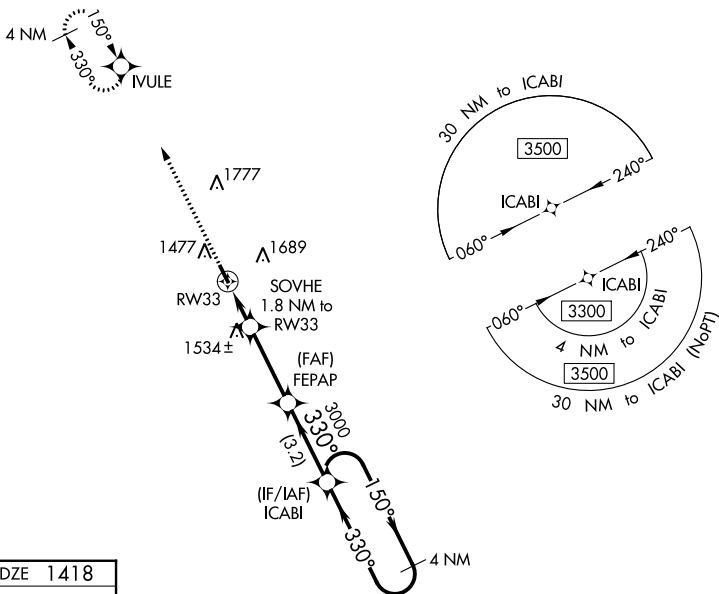
RNAV (GPS) RWY 33

PARKSTON MUNI (8V3)

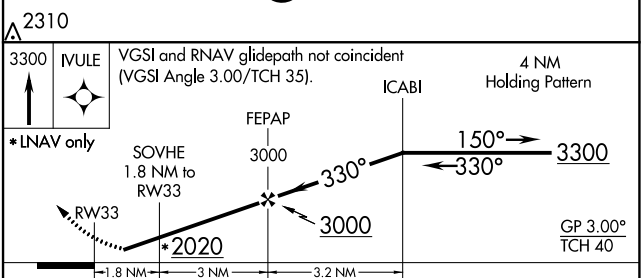
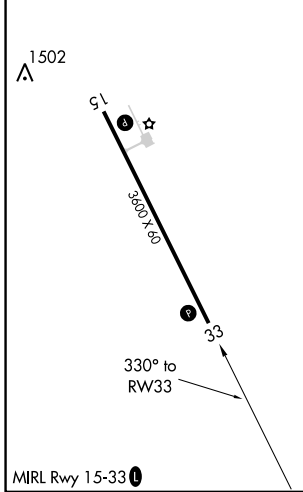
NA DME/DME RNP-0.3 NA. Use Mitchell altimeter setting; when not received, use Yankton altimeter setting and increase all DA 32 feet and all MDA 40 feet. Helicopter visibility reduction below $\frac{3}{4}$ SM not authorized. Baro-VNAV NA.

MISSED APPROACH: Climb to 3300 direct IVULE and hold.

MHE ASOS 124.175	MINNEAPOLIS CENTER 128.0 385.5	AUNICOM 122.9 (CTAF) 1
----------------------------	--	----------------------------------



ELEV 1418	TDZE 1418
-----------	-----------



CATEGORY	A	B	C	D
LPV DA	1740-1 $\frac{1}{8}$	322 (400-1 $\frac{1}{8}$)		NA
LNAV/VNAV DA	1740-1 $\frac{1}{8}$	322 (400-1 $\frac{1}{8}$)		NA
LNAV MDA	1860-1	442 (500-1)		NA
C CIRCLING	1980-1 562 (600-1)	2060-1 642 (700-1)		NA

NC-1, 16 MAY 2024 to 13 JUN 2024

NC-1, 16 MAY 2024 to 13 JUN 2024