

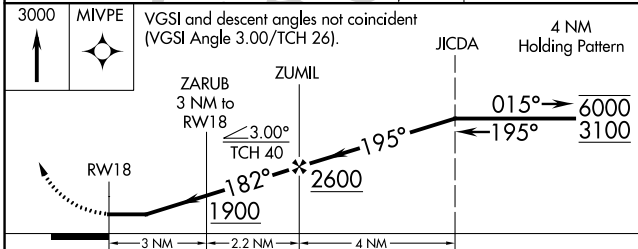
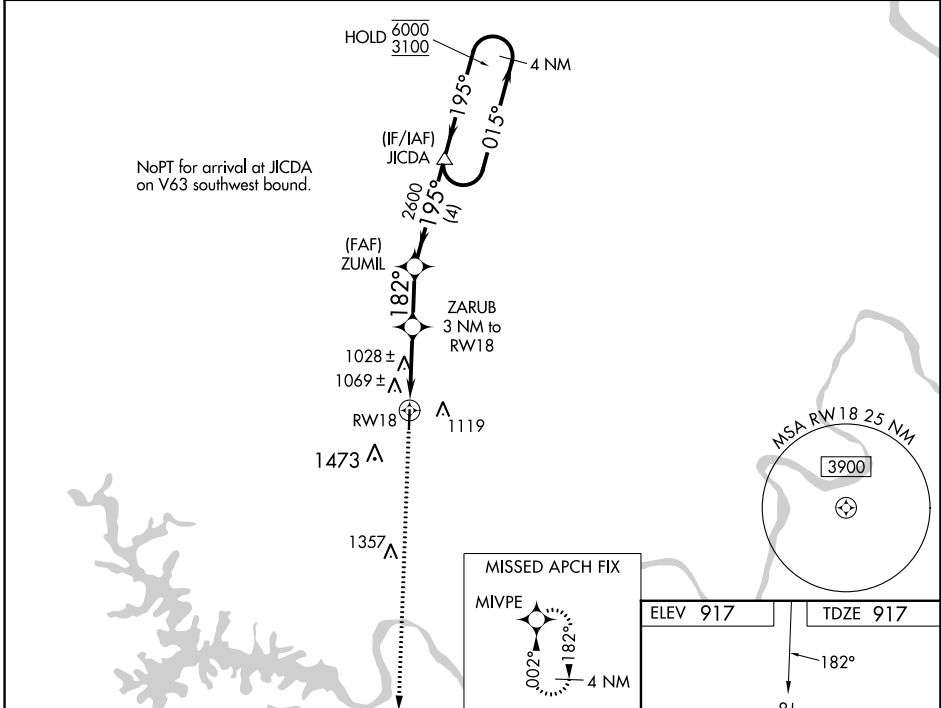
WAAS CH 45530 W18A	APP CRS 182°	Rwy ldg TDZE Apt Elev	4000 917 917
--	------------------------	-----------------------------	---

RNAV (GPS) RWY 18

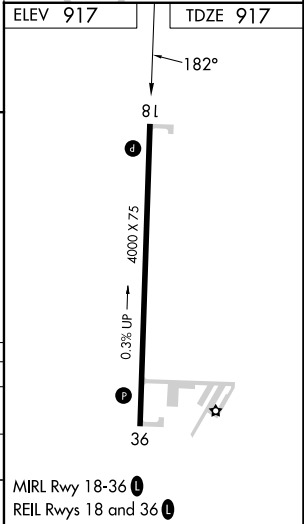
ELDON MODEL AIRPARK (H79)

RNP APCH.	<p>▼ Rwy 18 helicopter visibility reduction below 3/4 SM NA. Use Kaiser/Lake Ozark altimeter setting, when not received, use Fort Leonard Wood altimeter setting and increase all MDA 100 feet; increase LNAV and LP Cat C and Circling Cats B/C visibility 1/4 SM.</p>	<p>MISSED APPROACH: Climb to 3000 direct MIVPE and hold.</p>
<p>▲ NA</p>		

AIZ AWOS-3 PT 135.325	MIZZU APP CON 124.1 353.925	UNICOM 122.8 (CTAF) 0
---------------------------------	---------------------------------------	---------------------------------



CATEGORY	A	B	C	D
LP MDA	1340-1	423 (500-1)	1340-1¼ 423 (500-1¼)	NA
LNAV MDA	1500-1	583 (600-1)	1500-1¼ 583 (600-1¼)	NA
CIRCLING	1520-1 603 (700-1)	1820-1¼ 903 (1000-1¼)	1820-2¾ 903 (1000-2¾)	NA



MIRL Rwy 18-36 0
REIL Rwy 18 and 36 0

NC-3, 16 MAY 2024 to 13 JUN 2024

NC-3, 16 MAY 2024 to 13 JUN 2024