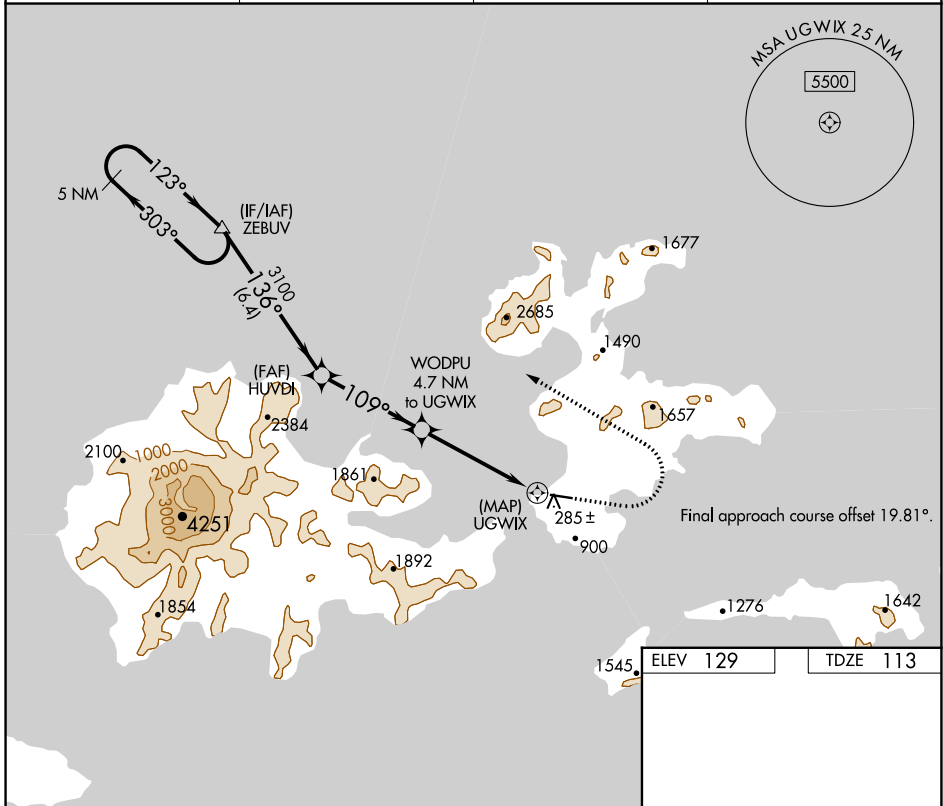


APP CRS	Rwy Idg	<b>4500</b>
<b>109°</b>	TDZE	<b>113</b>
	Apt Elev	<b>129</b>

# RNAV (GPS) RWY 9

AKUTAN (7AK)(PAUT)

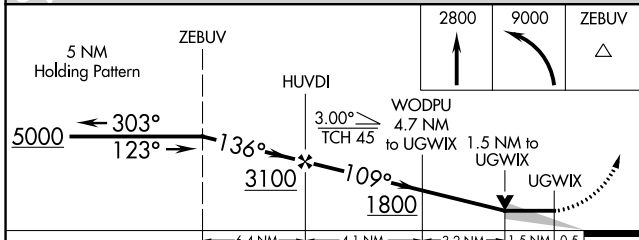
DME/DME RNP-0.3 NA. Procedure NA at night.		MISSED APPROACH: Climb to 2800 then climbing left turn to 9000 direct ZEBUV and hold, continue climb-in-hold to 9000.	
AWOS-3P	ANCHORAGE CENTER	GCO	CTAF
<b>129.05</b>	<b>121.4</b>	<b>130.3</b>	<b>122.9</b>



AK, 16 MAY 2024 to 11 JUL 2024

AK, 16 MAY 2024 to 11 JUL 2024

ELEV 129	TDZE 113
----------	----------



	6.4 NM		4.1 NM		3.2 NM		1.5 NM		0.5 NM	
CATEGORY	A		B		C		D			
RNAV MDA	780-1 667 (700-1)		780-1 7/8 667 (700-1 7/8)							
CIRCLING	1020-1 1/4 891 (900-1 1/4)		1200-1 1/2 1071 (1100-1 1/2)		1600-3 1471 (1500-3)		1960-3 1831 (1900-3)			

MIRL Rwy 9-27