

WAAS CH <b>56541</b> <b>W16A</b>	APP CRS <b>167°</b>	Rwy Idg TDZE Apt Elev	<b>4201</b> <b>4132</b> <b>4138</b>
--	------------------------	-----------------------------	---

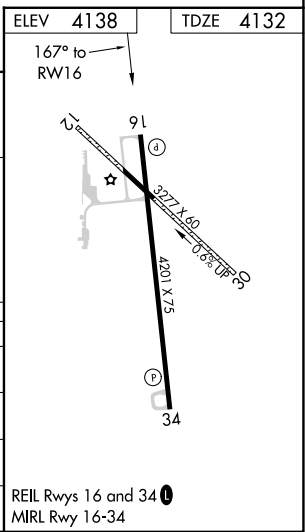
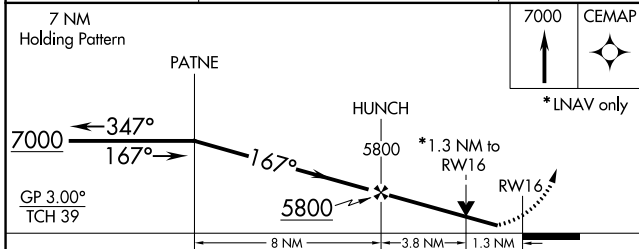
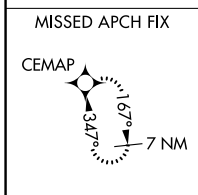
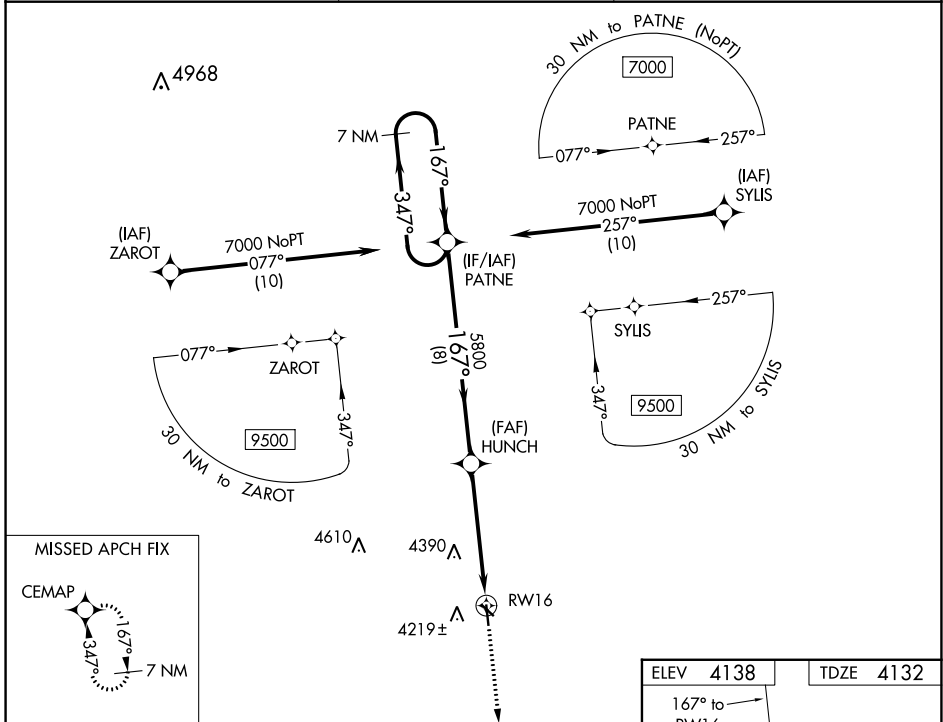
# RNAV (GPS) RWY 16

YUMA MUNI (2V6)

**⚠** Circling NA to Rwy's 12 and 30. For uncompensated Baro-VNAV systems, LNAV/VNAV NA below -23°C (-9°F) or above 54°C (130°F). Rwy 16 helicopter visibility reduction below ¼ SM NA. DME/DME RNP-0.3 NA.

MISSED APPROACH: Climb to 7000 direct CEMAP and hold.

AWOS-3 <b>135.375</b>	DENVER CENTER <b>133.95 317.55</b>	UNICOM <b>122.8 (CTAF) 1</b>
--------------------------	---------------------------------------	---------------------------------



CATEGORY	A	B	C	D
LPV DA	4382-1	250 (300-1)		NA
LNAV/VNAV DA	4452-1	320 (400-1)		NA
LNAV MDA	4580-1	448 (500-1)	4580-1 3/8 448 (500-1 3/8)	NA
<b>C</b> CIRCLING	4620-1 482 (500-1)	4640-1 502 (600-1)	4700-1 1/2 562 (600-1 1/2)	NA

SW-1, 16 MAY 2024 to 13 JUN 2024

SW-1, 16 MAY 2024 to 13 JUN 2024