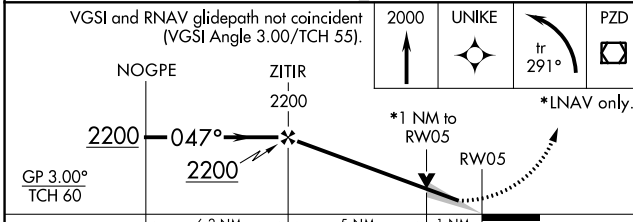
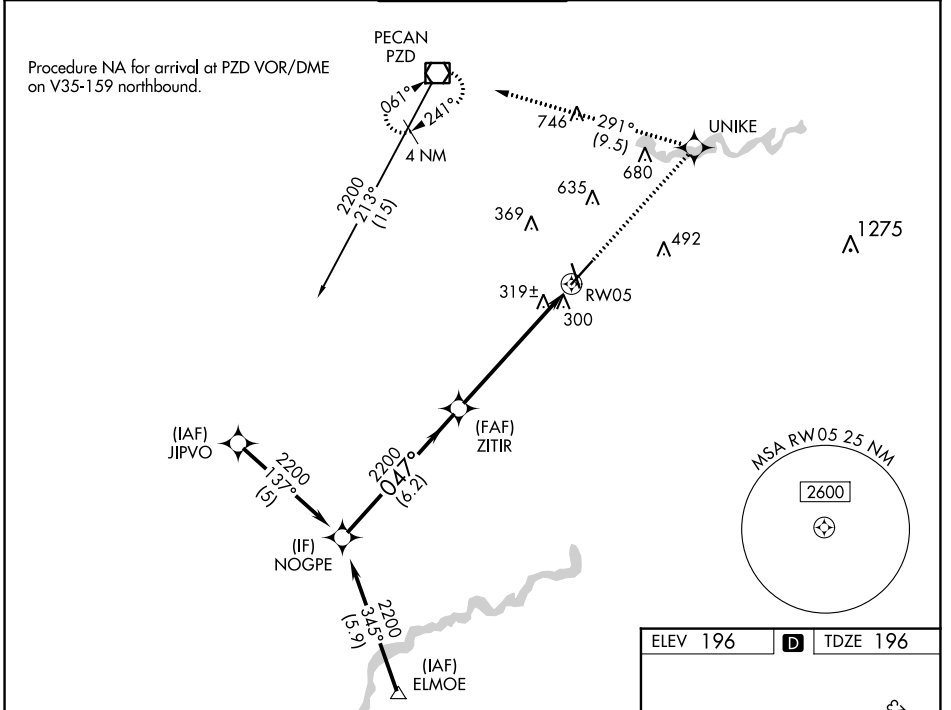


WAAS CH 78000 W05A	APP CRS 047°	Rwy Idg 6601 TDZE 196 Apt Elev 196
--	------------------------	---

RNAV (GPS) RWY 5

SOUTHWEST GEORGIA RGNL (A.B.Y)

RNP APCH.		MALSR	MISSED APPROACH: Climb to 2000 direct UNIKE and left turn on track 291° to PZD VOR/DME and hold.	
ATIS 133.05	JACKSONVILLE CENTER 125.75 363.075	ALBANY TOWER * 120.25 (CTAF) 0336.4	GND CON 121.9 348.6	UNICOM 122.95



ELEV 196	D	TDZE 196
----------	----------	----------

Key elements in diagram:

- RWY 5 (6601 x 148)
- RWY 18 (3219 x 148)
- RWY 23 (6601 x 148)
- TWR 263
- Obstacles: 35, 252
- Angle: 047°

HIRL Rwy 5-23 **1**
 MIRL Rwy 17-35 **1**
 REIL Rwy 35 **1**
 REIL Rwy 17 and 23

CATEGORY	A	B	C	D
LPV DA**	396/24		200 (200-½)	
LNAV/VNAV DA	635/50		439 (500-1)	
LNAV MDA	580/24		384 (400-½)	
C CIRCLING	640-1	660-1	940-2¼	940-2½
	444 (500-1)	464 (500-1)	744 (800-2¼)	744 (800-2½)

SE-4, 13 JUN 2024 to 11 JUL 2024

SE-4, 13 JUN 2024 to 11 JUL 2024