

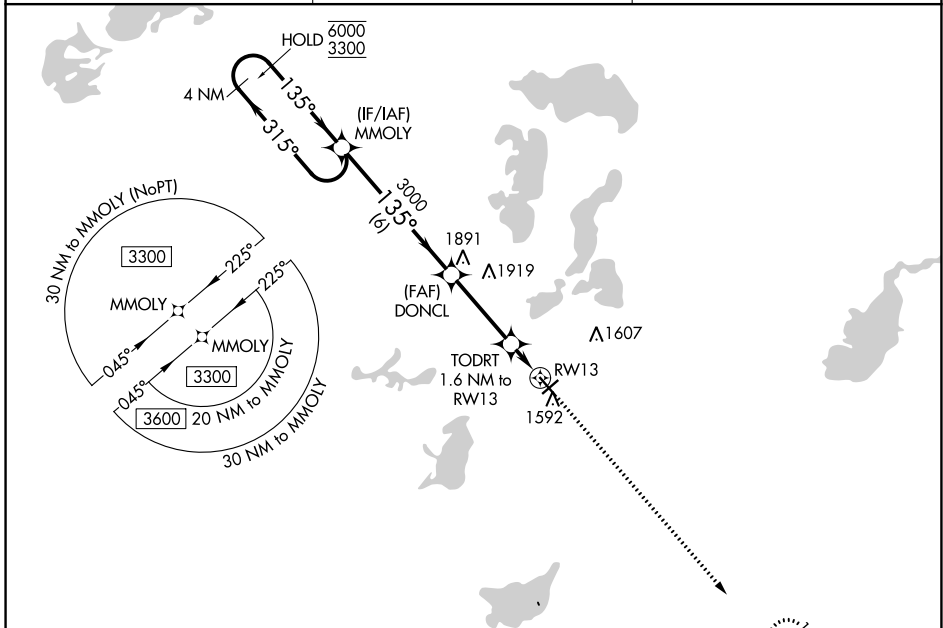
WAAS CH 50245 W13A	APP CRS 135°	Rwy Idg TDZE Apt Elev	5099 1424 1425
--	------------------------	-----------------------------	---

RNAV (GPS) RWY 13

CHANDLER FLD (AXN)

RNP APCH - GPS.	MISSED APPROACH: Climb to 3600 direct WUNYE and hold.
For uncompensated Baro-VNAV systems, LNAV/VNAV NA below -24°C or above 54°C.	

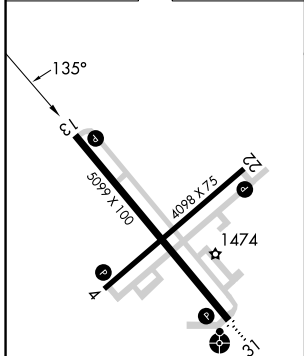
ASOS 118.375	MINNEAPOLIS CENTER 126.1 269.2	UNICOM 123.0 (CTAF) 0
------------------------	--	---------------------------------



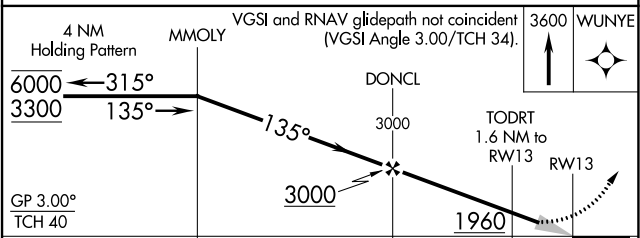
NC-1, 13 JUN 2024 to 11 JUL 2024

NC-1, 13 JUN 2024 to 11 JUL 2024

ELEV 1425	TDZE 1424
-----------	-----------



REIL Rws 4, 13, and 22 0
MIRL Rws 4-22 and 13-31 0



CATEGORY	Distance (NM)			
	A	B	C	D
LPV DA	1674-1		250 (300-1)	
LNAV/VNAV DA	1721-1		297 (300-1)	
LNAV MDA	1800-1		376 (400-1)	
CIRCLING	1900-1 475 (500-1)		1940-1½ 515 (600-1½)	
			2000-2 575 (600-2)	