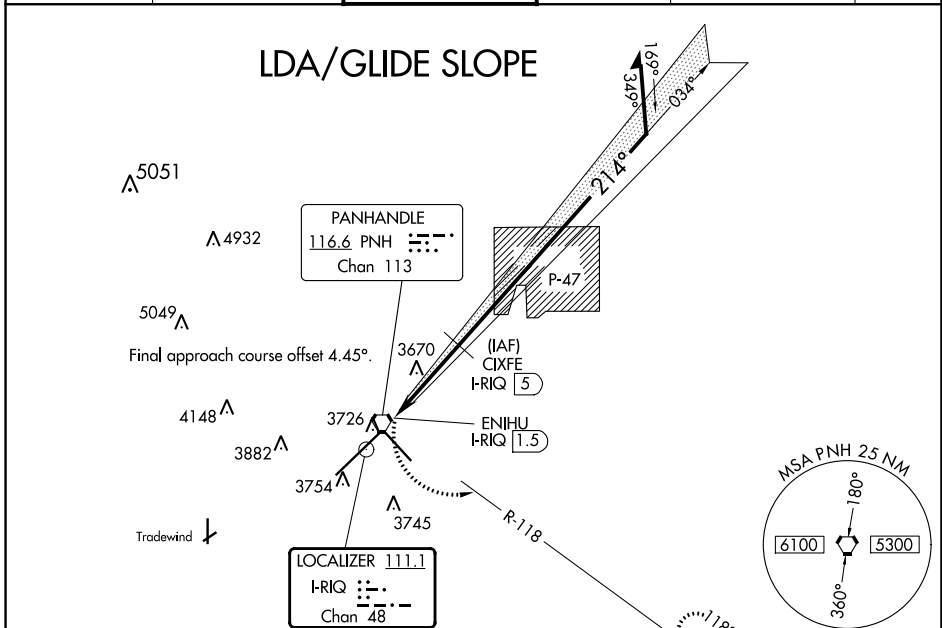


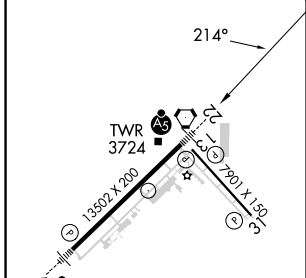
LOC/DME I-R/Q 111.1 Chan 48	APP CRS 214°	Rwy Idg 13502 TDZE 3606 Apt Elev 3607
---	------------------------	--

LDA RWY 22
RICK HUSBAND AMARILLO INTL (AMA)

RADAR required for procedure entry.		MALSR ASR	MISSED APPROACH: Climbing left turn to 5000 on PNH VORTAC R-118 to CAUDE and hold.		
ATIS 118.85 350.3	AMARILLO APP CON* 119.5 307.0	AMARILLO TOWER* 118.3(CTAF) 257.9	GND CON 121.9 348.6	CLNC DEL 121.65 239.275	UNICOM 122.95



ELEV 3607	D	TDZE 3606
-----------	---	-----------



5000 CAUDE	VGSI and LDA glidepath not coincident (VGSI Angle 3.00/TCH 77).	
PNH R-118	CIXFE I-R/Q 5	Remain within 15 NM
ENIHU I-R/Q 1.5	5000	5100
	034°	214°
	5000	GS 3.00° TCH 62

CATEGORY	A	B	C	D	E
S-LDA/GS 22	3856-1/2 250 (300-1/2)				
S-LDA 22	3920-1/2	314 (400-1/2)		3920-3/4	314 (400-3/4)
CIRCLING	4080-1	473 (500-1)	4240-1 3/4 633 (700-1 3/4)	4280-2 1/4 673 (700-2 1/4)	4460-3 853 (900-3)

SC-2, 13 JUN 2024 to 11 JUL 2024

SC-2, 13 JUN 2024 to 11 JUL 2024