

APP CRS 129°	Rwy Idg 7901
	TDZE 3603
	Apt Elev 3607

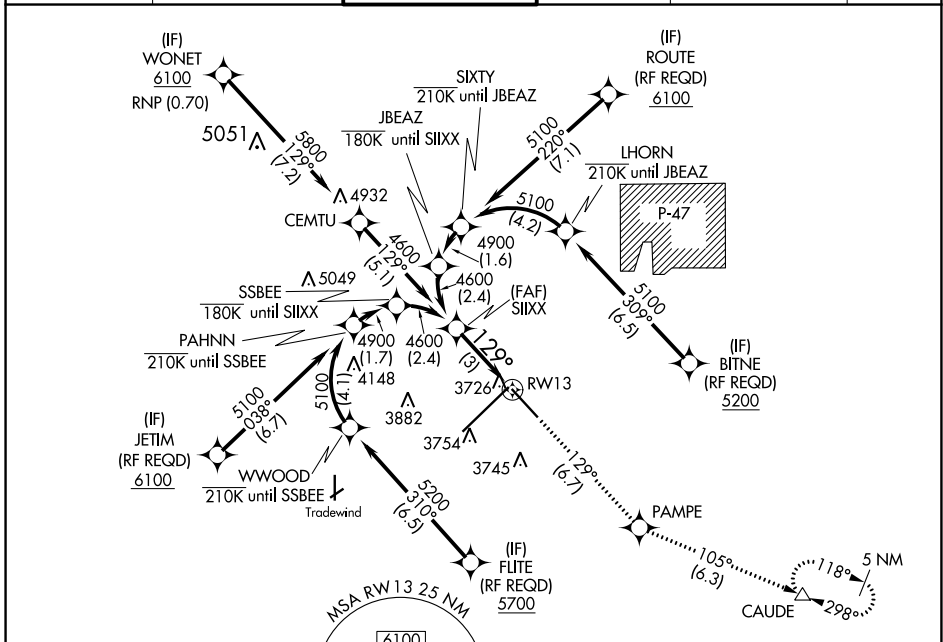
RNAV (RNP) Z RWY 13

RICK HUSBAND AMARILLO INTL (AMA)

ASR For uncompensated Baro-VNAV systems, procedure NA below -14°C (7°F) or above 51°C (124°F). GPS required.

MISSED APPROACH: Climb to 5400 on track 129° to PAMPE and track 105° to CAUDE and hold.

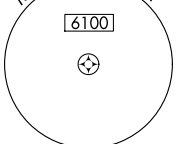
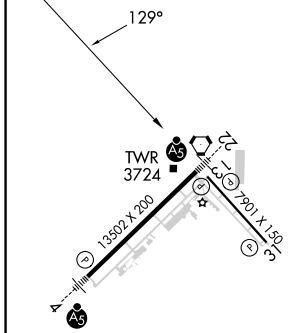
ATIS 118.85 350.3	AMARILLO APP CON* 119.5 307.0	AMARILLO TOWER* 118.3(CTAF) 257.9	GND CON 121.9 348.6	CLNC DEL 121.65 239.275	UNICOM 122.95
-----------------------------	---	---	-------------------------------	-----------------------------------	-------------------------



SC-2, 13 JUN 2024 to 11 JUL 2024

SC-2, 13 JUN 2024 to 11 JUL 2024

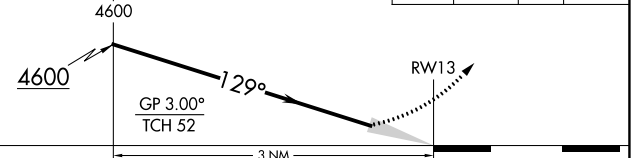
ELEV 3607	D	TDZE 3603
-----------	----------	-----------



RNAV 1 - GPS or RADAR REQUIRED

See planview for multiple IF locations.

5400 ↑ tr 129°	PAMPE ✧	tr 105°	CAUDE △
----------------------	------------	---------	------------



CATEGORY	A	B	C	D
RNP 0.30 DA		3976-1¼	373 (400-1¼)	

AUTHORIZATION REQUIRED