

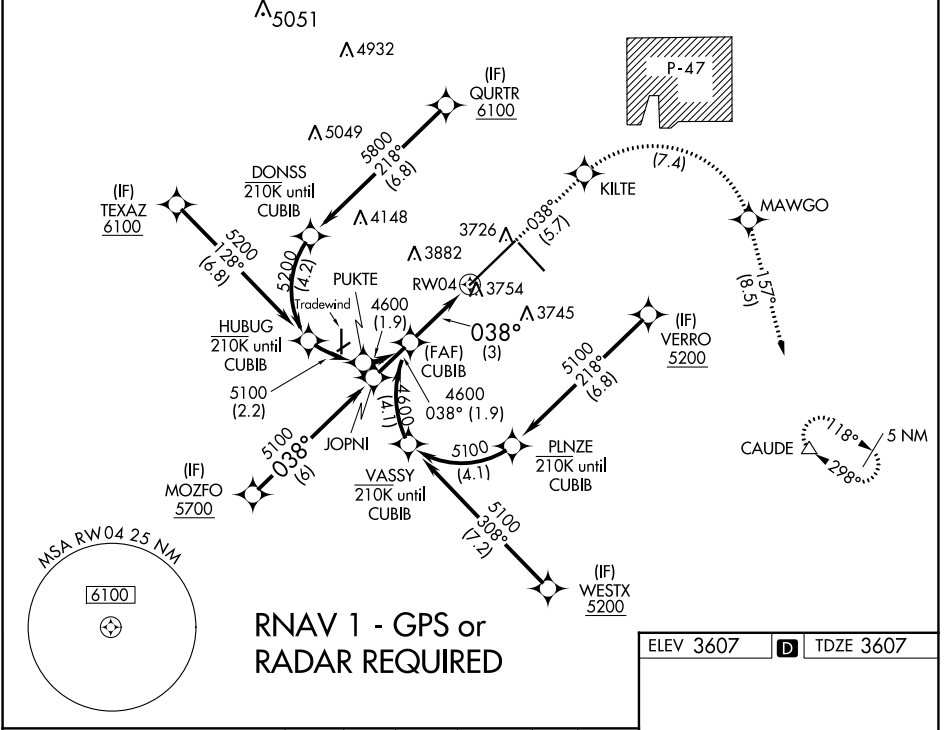
APP CRS	Rwy Idg	13502
038°	TDZE	3607
	Apt Elev	3607

RNAV (RNP) Z RWY 4

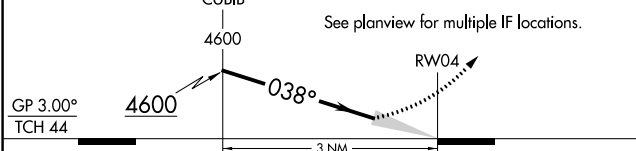
RICK HUSBAND AMARILLO INTL (AMA)

ASR	For uncompensated Baro-VNAV systems, procedure NA below -14°C (7°F) or above 53°C (128°F). RF required. GPS required. For inop ALS, increase RNP 0.30 all Cats visibility to 1½ SM.	MALSRS 	MISSED APPROACH: (Do not exceed 185K until MAWGO) Climb to 5400 on track 038° to KILTE, right turn to MAWGO, then track 157° to CAUDE and hold.

ATIS	AMARILLO APP CON*	AMARILLO TOWER*	GND CON	CLNC DEL	UNICOM
118.85 350.3	119.5 307.0	118.3(CTAF) 257.9	121.9 348.6	121.65 239.275	122.95

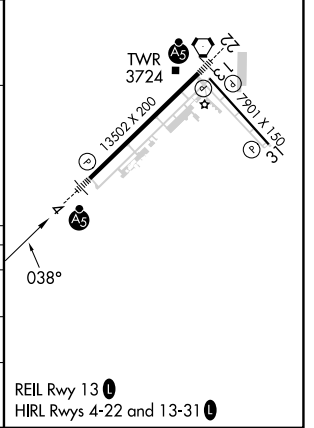


VGSI and RNAV glidepath not coincident (VGSI Angle 3.00/TCH 61).	5400 ↑ tr 038°	KILTE	MAWGO	CAUDE tr 157°
--	----------------------	-------	-------	------------------



CATEGORY	A	B	C	D
RNP 0.12 DA		3969/40	362 (400-¾)	
RNP 0.30 DA		4019/50	412 (500-1)	

AUTHORIZATION REQUIRED



SC-2, 13 JUN 2024 to 11 JUL 2024

SC-2, 13 JUN 2024 to 11 JUL 2024