

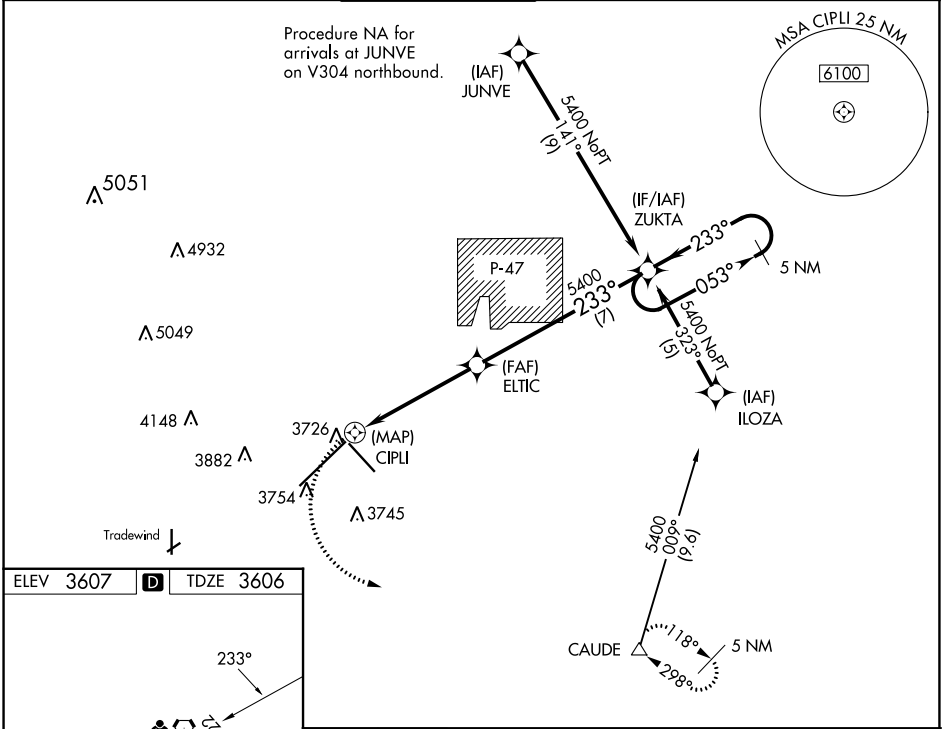
APP CRS <b>233°</b>	Rwy Idg TDZE Apt Elev	<b>13502</b> <b>3606</b> <b>3607</b>
------------------------	-----------------------------	--

# RNAV (GPS) Y RWY 22

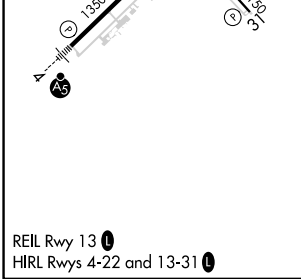
RICK HUSBAND AMARILLO INTL (AMA)

RNP APCH.		MALSR 	MISSED APPROACH: Climbing left turn to 5400 direct CAUDE and hold.		
 For inop ALS, increase Cat C/D/E visibility to RVR 6000.					

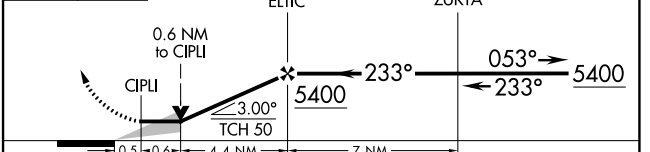
ATIS <b>118.85 350.3</b>	AMARILLO APP CON* <b>119.5 307.0</b>	AMARILLO TOWER* <b>118.3 (CTAF) 257.9</b>	GND CON <b>121.9 348.6</b>	CLNC DEL <b>121.65 239.275</b>	UNICOM <b>122.95</b>
-----------------------------	---	--	-------------------------------	-----------------------------------	-------------------------



ELEV 3607	<b>D</b>	TDZE 3606
-----------	----------	-----------



5400	CAUDE	VGSI and descent angles not coincident (VGSI Angle 3.00/TCH 77).	5 NM Holding Pattern
------	-------	--	----------------------



CATEGORY	A	B	C	D	E
LNAV MDA	4020-1/2	414 (500-1/2)	4020-3/4 414 (500-3/4)	4020-1	414 (500-1)
<b>C</b> CIRCLING	4080-1	473 (500-1)	4240-1 3/4 633 (700-1 3/4)	4280-2 1/4 673 (700-2 1/4)	4460-3 853 (900-3)

SC-2, 13 JUN 2024 to 11 JUL 2024

SC-2, 13 JUN 2024 to 11 JUL 2024